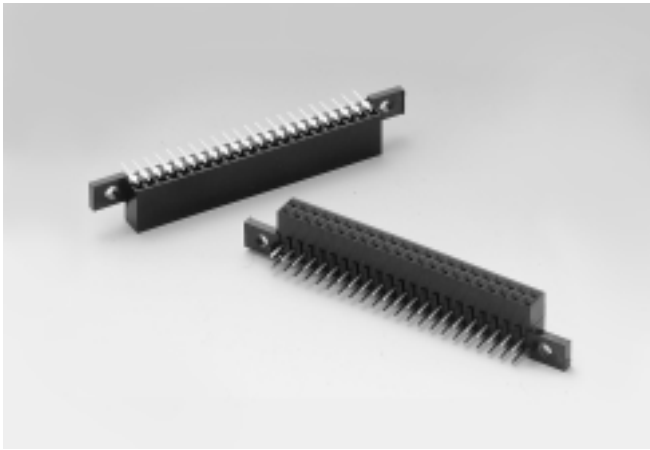


2.0mm DUAL ROW SOCKET RIGHT

ANGLE DIP TYPE W/O NUT (4.65MM PLASTIC HEIGHT)



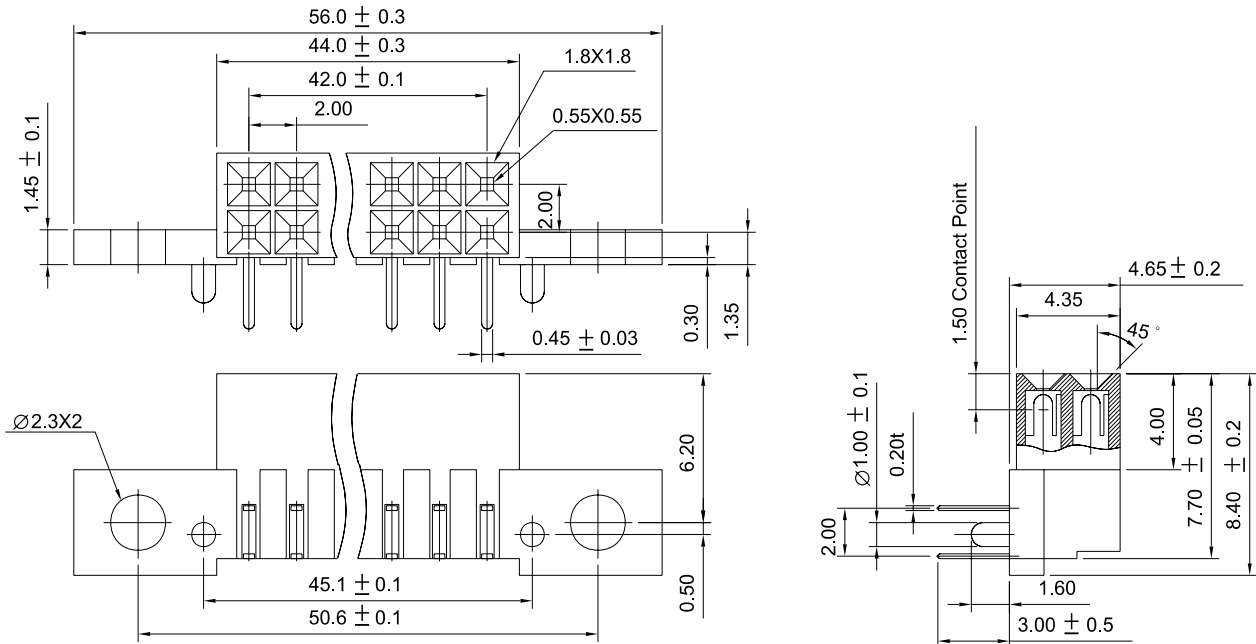
200138FR Series

Mates With 2.5" H.D.D. & SUYIN 200112, 200114 Series

Specifications:

- **44 Circuits**
- **Insulator Material** : Black High Temp. Plastic
- **Max Processing Temp.** : -40°C to +105°C
- **Terminal Material** : Pho. bronze
- **Plating** : Contact-Selective Gold Plated
or Full Gold Plated
- **Max. Current Rating** : 1.5A
- **Voltage Rating** : 150V AC
- **Dielectric Strength** : 500V (Min. 60 Seconds)

2.0
mm



Order Information

200138FR044□□00ZU
1 2 3 4 5

1. 'R' : Right Angle DIP Type
 2. No. of Pins
 3. Plating
 4. Color 'Z' : Black
 5. Package
'U' : Tube Package Without CAP
- Reference Page 11

Recommended P.C.B Layout

