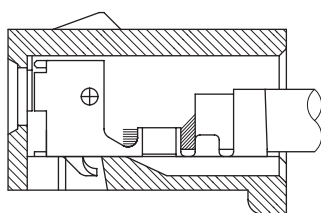
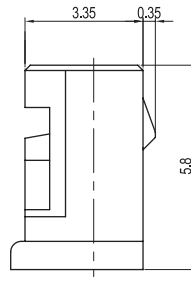
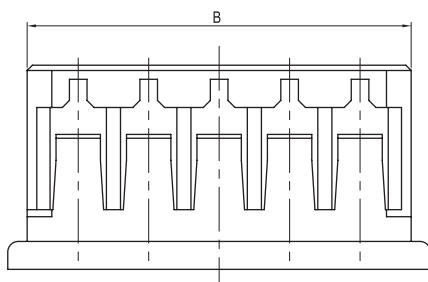
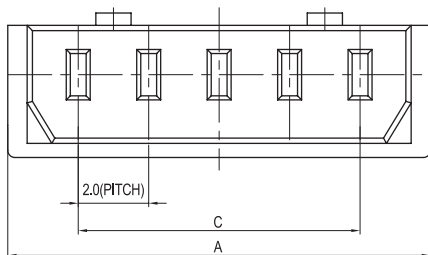
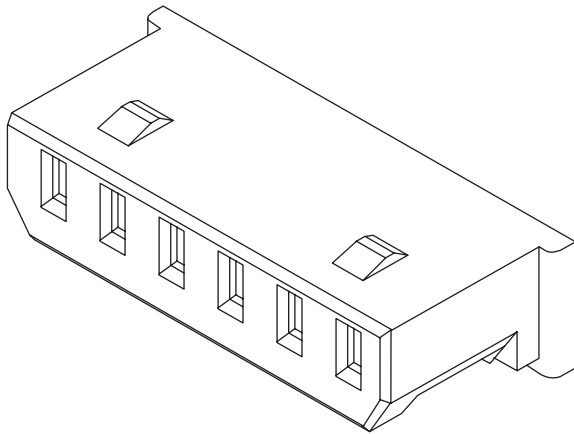


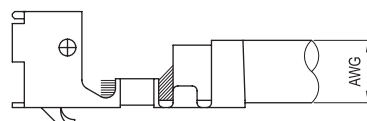
2.00mm (0.079") PITCH CONNECTOR

Wire-to-Board
Housing

20017HS Series



TERMINAL ASSEMBLY DRAWING



AWG : #24~ #28

Material

| I/NO | DESCRIPTION | TITLE | MATERIAL |
|------|-------------|---------|-------------------|
| 1 | HOUSING | 20017HS | PBT, UL 94V Grade |

Available Pin

| PARTS NO. | DIM. A | DIM. B | DIM. C |
|---------------|--------|--------|--------|
| 20017HS-02000 | 6.0 | 4.9 | 2.0 |
| 20017HS-03000 | 8.0 | 6.9 | 4.0 |
| 20017HS-04000 | 10.0 | 8.9 | 6.0 |
| 20017HS-05000 | 12.0 | 10.9 | 8.0 |
| 20017HS-06000 | 14.0 | 12.9 | 10.0 |
| 20017HS-07000 | 16.0 | 14.9 | 12.0 |
| 20017HS-08000 | 18.0 | 16.9 | 14.0 |
| 20017HS-09000 | 20.0 | 18.9 | 16.0 |
| 20017HS-10000 | 22.0 | 20.9 | 18.0 |
| 20017HS-11000 | 24.0 | 22.9 | 20.0 |
| 20017HS-12000 | 26.0 | 24.9 | 22.0 |
| 20017HS-13000 | 28.0 | 26.9 | 24.0 |
| 20017HS-14000 | 30.0 | 28.9 | 26.0 |
| 20017HS-15000 | 32.0 | 30.9 | 28.0 |

Specification

| ITEM | SPEC |
|------------------------|-------------|
| Voltage Rating | AC/DC 125V |
| Current Rating | AC/DC 2A |
| Operating Temperature | -25°C~+85°C |
| Contact Resistance | 30mΩ MAX |
| Withstanding Voltage | AC500V/1min |
| Insulation Resistance | 1000MΩ MIN |
| Applicable Wire | AWG #24~#28 |
| Applicable P.C.B | - |
| Applicable FPC/FFC | - |
| Solder Height | - |
| Crimp Tensile Strength | - |
| UL FILE NO | - |

Application Terminal : 20017TS (79 page)