

FAST RECOVERY RECTIFIER

VOLTAGE RANGE: 50 --- 1000 V
CURRENT: 1.0 A

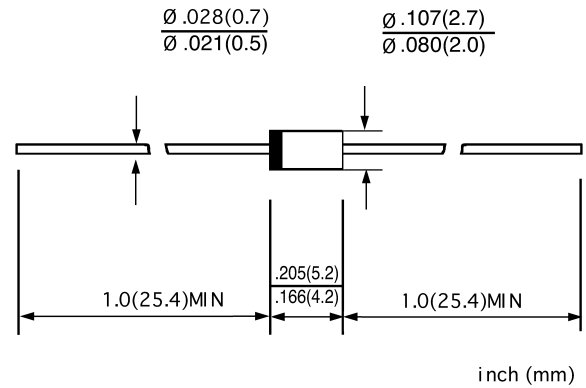
FEATURES

- ◇ Low cost
- ◇ Diffused junction
- ◇ Low leakage
- ◇ Low forward voltage drop
- ◇ High current capability
- ◇ Easily cleaned with Freon, Alcohol, Isopropanol and similar solvents
- ◇ The plastic material carries U/L recognition 94V-0

MECHANICAL DATA

- ◇ Case: JEDEC A-405, molded plastic
- ◇ Terminals: Axial lead, solderable per MIL-STD-202, Method 208
- ◇ Polarity: Color band denotes cathode
- ◇ Weight: 0.008 ounces, 0.23 grams
- ◇ Mounting position: Any

A - 405



MAXIMUM RATINGS AND ELECTRICAL CHARACTERISTICS

Ratings at 25°C ambient temperature unless otherwise specified.

Single phase, half wave, 60 Hz, resistive or inductive load. For capacitive load, derate by 20%.

		FR 101L	FR 102L	FR 103L	FR 104L	FR 105L	FR 106L	FR 107L	UNITS
Maximum recurrent peak reverse voltage	V_{RRM}	50	100	200	400	600	800	1000	V
Maximum RMS voltage	V_{RMS}	35	70	140	280	420	560	700	V
Maximum DC blocking voltage	V_{DC}	50	100	200	400	600	800	1000	V
Maximum average forward rectified current 9.5mm lead length, @ $T_A=75^\circ C$	$I_{F(AV)}$	1.0							A
Peak forward surge current 8.3ms single half-sine-wave superimposed on rated load @ $T_J=125^\circ C$	I_{FSM}	30.0							A
Maximum instantaneous forward voltage @ 1.0 A	V_F	1.3							V
Maximum reverse current @ $T_A=25^\circ C$ at rated DC blocking voltage @ $T_A=100^\circ C$	I_R	5.0 100.0							μA
Maximum reverse recovery time (Note1)	t_{rr}	150			250	500		ns	
Typical junction capacitance (Note2)	C_J	12							pF
Typical thermal resistance (Note3)	$R_{\theta JA}$	55							$^\circ C/W$
Operating junction temperature range	T_J	- 55---- + 150							$^\circ C$
Storage temperature range	T_{STG}	- 55---- + 150							$^\circ C$

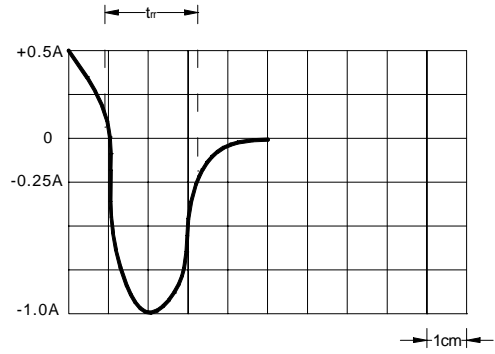
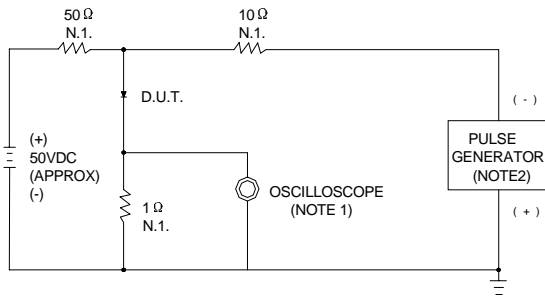
NOTE:1. Measured with $I_F=0.5A$, $I_R=1A$, $I_{rr}=0.25A$.

2. Measured at 1.0MHz and applied reverse voltage of 4.0V DC.

3. Thermal resistance from junction to ambient.

www.galaxycn.com

FIG.1 – REVERSE RECOVERY TIME CHARACTERISTIC AND TEST CIRCUIT DIAGRAM



NOTES:1.RISE TIME=7ns MAX. INPUT IMPEDANCE=1MΩ.22pF
2.RISE TIME=10ns MAX. SOURCE IMPEDANCE=50Ω

SET TIME BASE FOR 50/100 ns /cm

FIG.2 – TYPICAL FORWARD CHARACTERISTIC

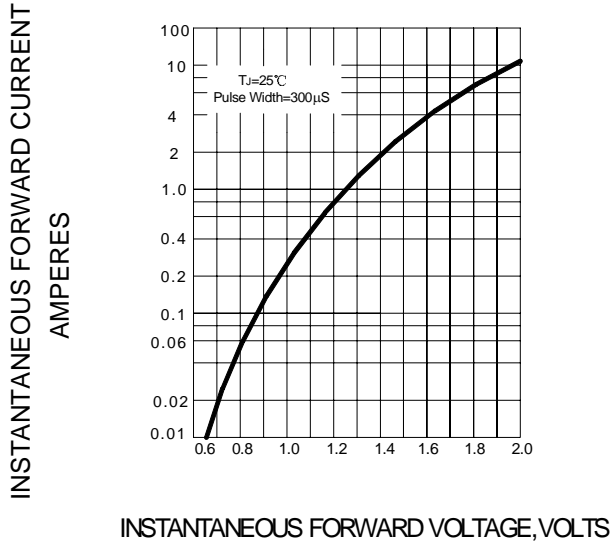


FIG.3 – FORWARD DERATING CURVE

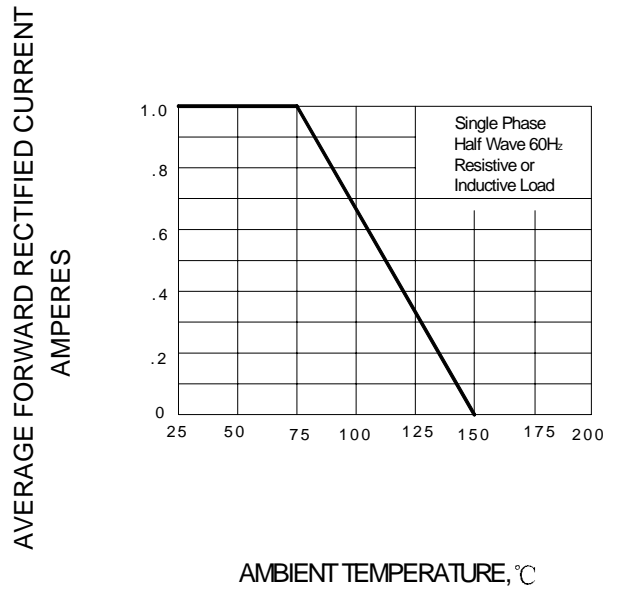


FIG.4 – TYPICAL JUNCTION CAPACITANCE

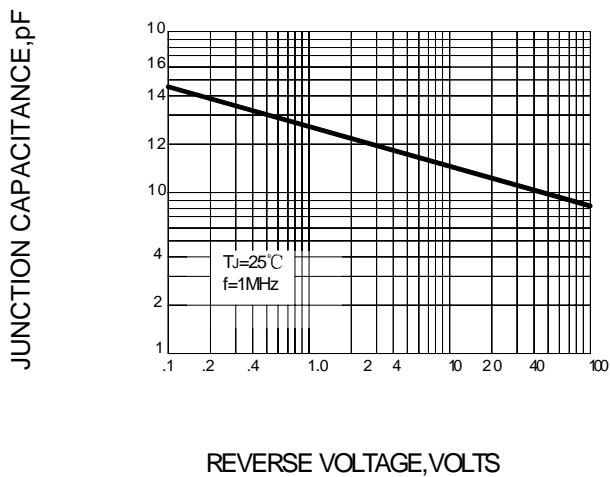


FIG.5 – PEAK FORWARD SURGE CURRENT

