



Low Profile Surface Mount Inductors

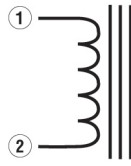
- Operating Temperature Range -40°C to +130°C
- Ambient Temperature, Maximum 80°C
- Insulation System Class B, 130°C
- Temperature Rise, Maximum 50°C

Specifications

Part Number	Operating Values			Case Size	Control Values ⁽³⁾		
	L _{DC} μ H ⁽¹⁾	I _{DC} Amps	ET _{op} V- μ S ⁽²⁾		L w/o DC L _o μ H \pm 20%	DC Resistance m Ω , Nom.	DC Resistance m Ω Max.
HM77 - 10001LF	1.01	3.40	0.532	1	1.10	11.00	12.5
HM77 - 20001LF	6.20	1.40	1.33	1	7.00	60.30	70
HM77 - 30001LF	17.6	1.00	2.40	1	22.7	109.00	125
HM77 - 40002LF	3.80	4.80	1.76	2	5.20	17.0	19.1
HM77 - 50002LF	9.40	2.80	2.70	2	12.3	37.80	43.4
HM77 - 60002LF	29.7	1.40	4.60	2	35.3	141.00	166
HM77 - 70002LF	114	0.94	10	2	167	330.00	380
HM77 - 80003LF	2.50	8.00	1.77	3	3.80	7.20	8.30
HM77 - 90003LF	5.10	5.40	2.51	3	7.50	14.30	17.7
HM77 - 10003LF	16.2	2.70	4.29	3	21.9	54.70	63
HM77 - 11003LF	58.1	1.30	7.83	3	73	233.00	290
HM77 - 12003LF	192	0.90	15.7	3	292	472.00	560
HM77 - 13003LF	383	0.72	23.5	3	672	750.00	862
HM77 - 14004LF	0.91	13.3	1.035	4	1.25	4.56	5.70
HM77 - 15004LF	1.32	11.5	1.33	4	2.10	4.56	5.70
HM77 - 16004LF	4.90	7.80	3.04	4	7.90	10.50	12.4
HM77 - 17004LF	9.00	5.50	4.06	4	14	19.30	22.3
HM77 - 18004LF	29.1	2.70	6.90	4	40.5	75.80	85
HM77 - 19004LF	645	0.74	36.5	4	1134	1040	1250
HM77 - 30004LF	33	3.0	9.50	4	48	48.5	59
HM77 - 20005LF	1.75	10.9	1.83	5	2.80	5.68	6.90
HM77 - 21005LF	2.50	11.4	2.23	5	4.20	6.19	7.50
HM77 - 22006LF	2.03	13	3.30	6	2.70	5.60	6.80
HM77 - 23006LF	3.50	12.4	3.13	6	6.50	7.54	8.7
HM77 - 24006LF	4.70	10.4	3.58	6	8.40	8.30	10.0
HM77 - 25006LF	9.30	7.20	4.92	6	16	20.05	23.0
HM77 - 26006LF	16.1	5.10	6.27	6	25.9	30.3	32
HM77 - 27006LF	50	2.60	10.5	6	72.9	115	130
HM77 - 28006LF	1070	0.710	54.4	6	1950	1480	1700
HM77 - 29006LF	68	3.00	9.50	6	122	85	102
HM77 - 31007ALF	2.5	11.4	2.23	7	4.20	5.20	6.20
HM77 - 32007ALF	1.68	13.9	1.83	7	2.80	3.60	4.0
HM77 - 33010ALF	5.2	15.4	5.21	10	10.5	6.20	7.40
HM77 - 34010ALF	77	2.7	52.8 ⁽⁴⁾	10	84.6	90	110
HM77 - 35010ALF	38	3.0	29.7 ⁽⁴⁾	10	49	50	70
HM77 - 36010ALF	114	2.22	62.7 ⁽⁴⁾	10	121	100	120
HM77 - 37010ALF	191	1.50	72.6 ⁽⁵⁾	10	275	250	290
HM77 - 38010ALF	115	1.81	75.9 ⁽⁵⁾	10	159	190	220
HM77 - 39010ALF	38	3.00	42.9 ⁽⁵⁾	10	52	80	100

- Notes: (1) Inductance values are rated at -40°C to +130°C operating temperature range with rated DC current flowing and the operating ET_{op} across the inductor.
(2) ET_{op} is rated at 500 kHz except where designated otherwise.
(3) The control values of inductance are measured at the operating flux density equal or less than 10 gauss and without DC current.
(4) ET_{op} is rated at 250 kHz.
(5) ET_{op} is rated at 150 kHz.

Schematic



Outline Dimensions (Inch/mm) / Packaging

Figure 1

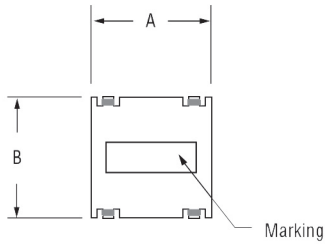


Figure 2

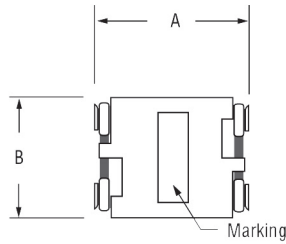
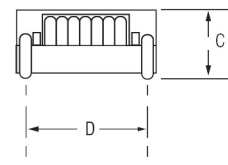
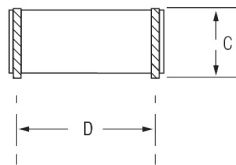
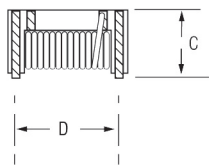
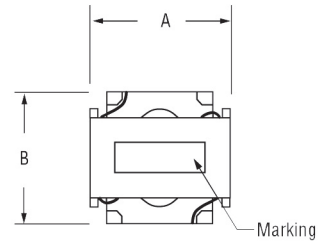
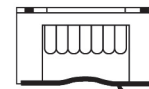


Figure 3

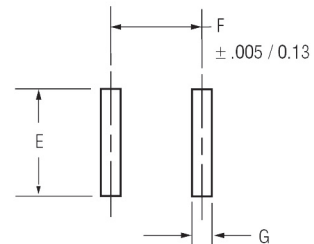


Case Size	A	B	C	D	E	F	G	Tube Capacity	Reel Capacity	Figure
1	.340 8.64	.340 8.64	.250 6.35	.260 6.60	.330 8.38	.270 6.86	.060 1.52	60	500	1
2	.447 11.35	.447 11.35	.350 8.89	.350 8.89	.425 10.80	.360 9.14	.060 1.52	50	350	1
3	.571 14.50	.571 14.50	.350 8.89	.450 11.43	.550 13.97	.460 11.68	.100 2.54	35	350	2
4	.625 15.88	.600 15.24	.360 9.14	.500 12.70	.580 14.73	.510 12.95	.100 2.54	37	200	2
5	.725 18.40	.585 14.90	.360 9.14	.610 15.50	.580 14.73	.610 15.50	.100 2.54	37	200	2
6	.805 20.40	.710 18.03	.445 11.30	.680 17.27	.690 17.53	.690 17.53	.100 2.54	30	150	2
7	.669 17.00	.669 17.00	.400 10.16	.560 14.22	.665 16.89	.560 14.22	.100 2.54	35	200	2
10	.945 24.00	.965 24.50	.394 10.00	.820 20.83	.950 24.13	.830 21.08	.110 2.80	23	150	3



.005 / 0.13
Coplanarity
measured
at 4 points.

Recommended Solder Pad Layout



- Notes: (1) For case size 1 to 6, the reel capacity is for part number ending with suffix 'LFTR'.
 (2) For case size 7 & 10, the reel capacity is for part number ending with suffix 'ALFTR'

Ordering Information

