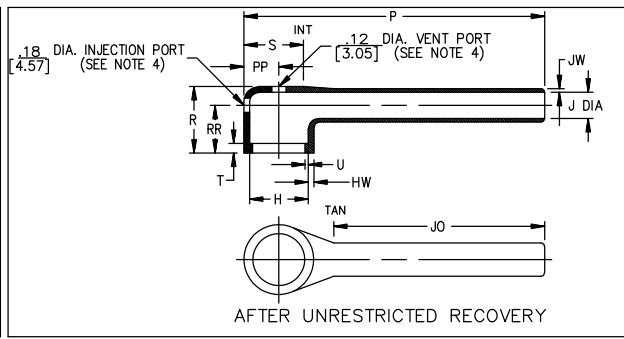
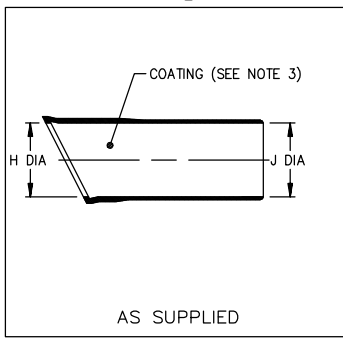


Thermofit Molded Parts Specification Control Drawing

Part Number : 222D211 thru 299
Description : Boot, 90°, With Lip

- NOTES**
- All dimensions are in inches [millimeters]; lbs [grams]
 - Dimensions appearing in table are as follows:
 - a - As Supplied
 - b - After Unrestricted Recovery
 - Coating is optional. As supplied dimensions appearing in table are for uncoated parts. When coating is added, entry diameters will be reduced by .06 max.
 - Molding ports are optional. When -00 modification number is specified molding ports will be located as shown.
 - Weight shown in table of dimensions is based on polyolefin part.



| PART NUMBER | H | | J | | | P ±10% | R Ref | S Ref | T Ref | U Ref | JO ±10% | PP ±10% | RR ±10% | HW ±20% | JW ±20% | Weight Nom |
|-------------|----------------|----------------|----------------|-----------------------|---------------|-----------------|----------------|----------------|---------------|----------------|-----------------|----------------|----------------|---------------|----------------|---------------|
| | Min | Max | Min -3,-4,-25 | Min -5,-6,-8,-12,-100 | Max | | | | | | | | | | | |
| 222D211 | a | b | a | a | b | a | b | a | b | a | b | a | b | a | b | a |
| | .88 [22,4] | .45 [11,4] | .88 [22,4] | .55 [14,0] | .25 [6,4] | 4.14 [105,2] | .73 [18,5] | .47 [11,9] | .12 [3,05] | .04 [1,02] | 3.45 [87,6] | .27 [6,9] | .49 [12,4] | .06 [1,52] | .045 [1,14] | .01 [5,0] |
| 222D221 | 1.01 [25,7] | .59 [15,0] | 1.01 [25,7] | .63 [16,0] | .29 [7,4] | 4.88 [124,0] | .78 [19,8] | .60 [15,2] | .12 [3,05] | .04 [1,02] | 3.90 [99,1] | .33 [8,4] | .59 [15,0] | .06 [1,52] | .045 [1,14] | .02 [9,0] |
| | 1.16 [29,5] | .74 [18,8] | 1.16 [29,5] | .72 [18,3] | .33 [8,4] | 5.76 [146,3] | .82 [20,8] | .75 [19,1] | .12 [3,05] | .04 [1,02] | 4.50 [114,3] | .41 [10,4] | .61 [15,5] | .07 [1,78] | .045 [1,14] | .02 [9,0] |
| 222D232 | 1.34 [34,0] | .90 [22,9] | 1.34 [34,0] | .84 [21,3] | .38 [9,7] | 6.78 [172,2] | .86 [21,8] | .90 [22,9] | .12 [3,05] | .04 [1,02] | 5.22 [132,6] | .48 [12,2] | .62 [15,7] | .07 [1,78] | .045 [1,14] | .03 [14,0] |
| | 1.47 [37,3] | 1.16 [29,5] | 1.47 [37,3] | .91 [23,1] | .41 [10,4] | 7.29 [185,2] | .96 [24,4] | 1.15 [29,2] | .12 [3,05] | .065 [1,65] | 5.66 [143,8] | .61 [15,5] | .70 [17,8] | .08 [2,03] | .045 [1,14] | .03 [14,0] |
| 222D263 | 1.72 [43,7] | 1.34 [34,0] | 1.72 [43,7] | 1.07 [27,2] | .48 [12,2] | 8.41 [213,6] | 1.08 [27,4] | 1.32 [33,5] | .12 [3,05] | .065 [1,65] | 6.66 [169,2] | .72 [18,3] | .78 [19,8] | .08 [2,03] | .045 [1,14] | .05 [24,0] |
| | 1.97 [50,0] | 1.62 [41,1] | 1.97 [50,0] | 1.24 [31,5] | .56 [14,2] | 8.84 [224,5] | 1.16 [29,5] | 1.59 [40,4] | .12 [3,05] | .065 [1,65] | 6.82 [173,2] | .83 [21,1] | .82 [20,8] | .09 [2,29] | .055 [1,40] | .10 [46,0] |
| 222D274 | 2.47 [62,7] | 1.85 [47,0] | 2.47 [62,7] | 1.54 [39,1] | .69 [17,5] | 8.95 [227,3] | 1.31 [33,3] | 1.81 [46,0] | .12 [3,05] | .08 [2,03] | 6.62 [168,1] | .95 [24,1] | .92 [23,4] | .10 [2,54] | .055 [1,40] | .10 [46,0] |
| | 2.73 [69,3] | 2.35 [59,7] | 2.73 [69,3] | 1.70 [43,2] | .77 [19,6] | 9.19 [233,4] | 1.38 [35,1] | 2.28 [57,9] | .12 [3,05] | .08 [2,03] | 6.19 [157,2] | 1.18 [30,0] | .93 [23,6] | .10 [2,54] | .055 [1,40] | .10 [46,0] |
| 222D285 | 3.22 [81,8] | 2.64 [67,1] | 3.22 [81,8] | 2.01 [51,1] | .90 [22,9] | 9.33 [237,0] | 1.75 [44,5] | 2.55 [64,8] | .12 [3,05] | .08 [2,03] | 5.95 [151,1] | 1.31 [33,3] | 1.23 [31,2] | .10 [2,54] | .055 [1,40] | .11 [48,0] |
| | | | | | | | | | | | | | | | | |

STE Raychem
TE Connectivity
300 CONSTITUTION DRIVE
MENLO PARK, CALIFORNIA 94025
(415) 361-6055

IF THIS DOCUMENT IS PRINTED IT BECOMES UNCONTROLLED.
CHECK FOR THE LATEST REVISION.

Revision : R
Date : 20APR11

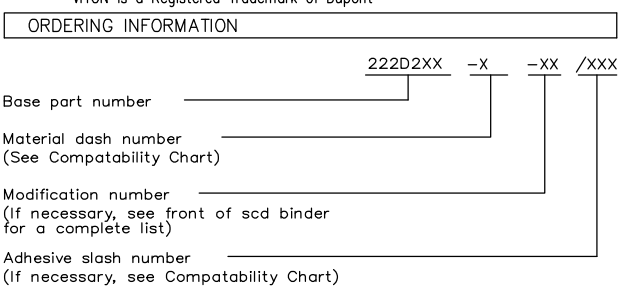
Part Number : 222D211 thru 299
Description : Boot, 90°, With Lip

Thermofit Molded Parts Specification Control Drawing

Part Number : 222D211 thru 299
Description : Boot, 90°, With Lip

| MATERIAL DASH NO. | MATERIAL DESCRIPTION | RT SPEC | COATING SLASH NO. | COATING S NO. | COATING DESCRIPTION |
|-------------------|---------------------------------------|---------|---------------------|--------------------------------|---------------------|
| -3 | Polyolefin, Semi-rigid | RT-301 | /42; /86; /87; /180 | S-1017; S-1048; S-1052; S-1030 | Adhesive |
| -4 | Polyolefin, Flexible | RT-1304 | /42; /86; /87; /180 | S-1017; S-1048; S-1052; S-1030 | Adhesive |
| -5 | Elastomer, Flexible | RT-501 | N/A | | |
| -6 | Silicone | RT-602 | N/A | | |
| -8 | Polyolefin, Space | RT-1308 | N/A | | |
| -12 | *VITON, Flexible | RT-1312 | N/A | | |
| -25 | Elastomer, Fluid Resistant | RT-1325 | /42; /86 | S-1017; S-1048 | Adhesive |
| -100 | Polyolefin, Semi-flexible ZEROHAL™ | RT-1323 | /184 | S-1030 | Adhesive |

*VITON is a Registered Trademark of Dupont



THIS DRAWING IS SUBJECT TO CHANGE WITHOUT NOTICE; CONSULT YOUR NEAREST FIELD REPRESENTATIVE FOR CURRENT REVISION

STE Raychem
TE Connectivity
300 CONSTITUTION DRIVE
MENLO PARK, CALIFORNIA 94025
(415) 361-6055

Revision : R
Date : 20APR11

Part Number : 222D211 thru 299
Description : Boot, 90°, With Lip

CAD FILE MP92422

IF THIS DOCUMENT IS PRINTED IT BECOMES UNCONTROLLED.
CHECK FOR THE LATEST REVISION.