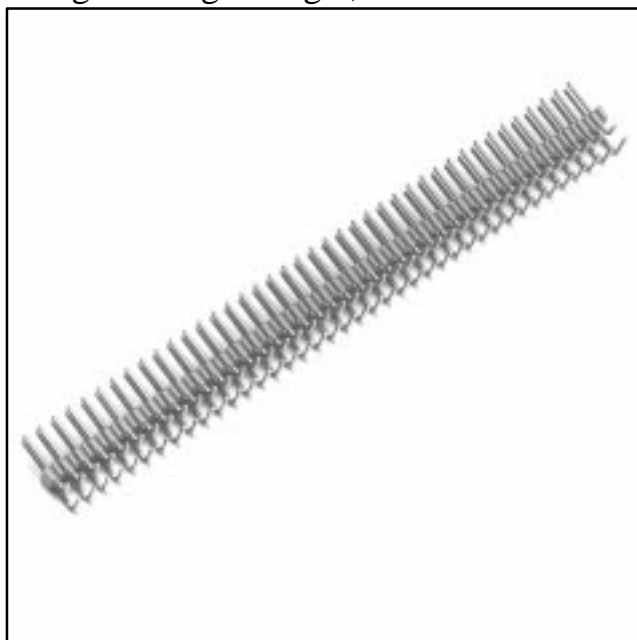


# .100" and .100" × .100" Pin Strip Header

Straight & Right Angle, Solder Tail

2400 Series



- One and two row versions
- Straight and right angle versions
- Break to length for faster delivery, lower inventory costs, and faster prototyping
- Tapered tip does not cut the socket wipe during insertion, reducing operational failures and repairs
- Solder standoffs facilitate wash of flux residue, reducing costly rework
- Board pin retention feature available

Date Modified: December 28, 1999

TS-0767-03  
Sheet 1 of 3

14

---

## Physical

### Insulation

Material: Glass Filled Polyester (PBT)  
Flammability: UL 94V-0  
Color: Gray

### Contact

Material: Copper Alloy  
Plating  
Underplate: 100  $\mu$ " [ 2.54  $\mu$ m ] Nickel — QQ-N-290, Class 2  
Wiping Area: 30  $\mu$ " [ 0.76  $\mu$ m ] Gold — MIL-G-45204, Type II, Grade C  
Solder Tails: 200  $\mu$ " [ 5.08  $\mu$ m ] 90/10 Tin Lead — MIL-P-81728

---

## Electrical

**Current Rating:** 3 A  
**Insulation Resistance:**  $> 1 \times 10^9 \Omega$  at 500 Vdc  
**Withstanding Voltage:** 1000 Vrms at Sea Level

---

## Environmental

**Temperature Rating:**  $-55^\circ\text{C}$  to  $+105^\circ\text{C}$

UL File No.: E68080

---

### 3M Interconnect Solutions Division

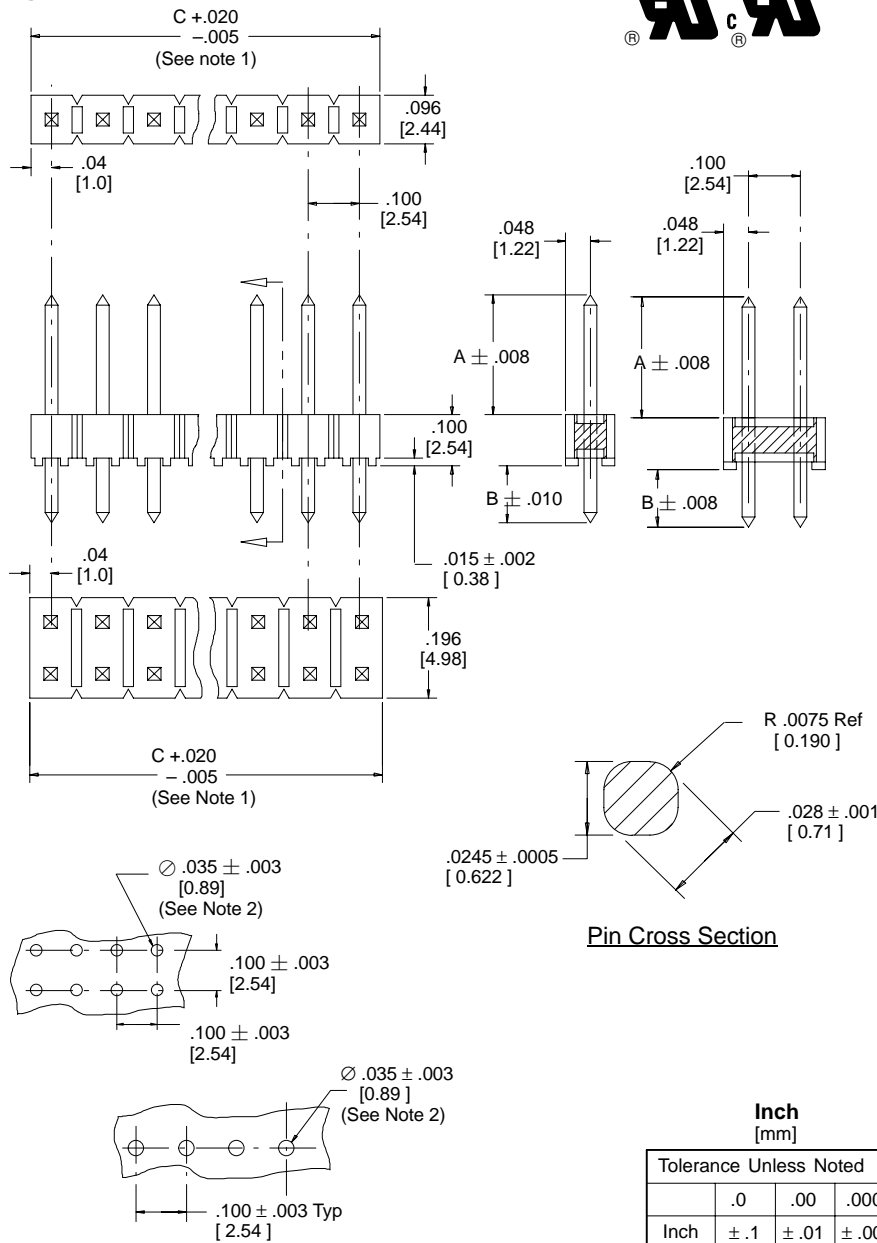
6801 River Place Blvd.  
Austin, TX 78726-9000

For technical, sales or ordering information call  
**800-225-5373**

# .100" and .100" × .100" Pin Strip Header Straight & Right Angle, Solder Tail

2400 Series

## Straight



Pin Quantity		Dimension C
One Row	Two Row	
01		0.09 [ 2.3 ]
02	04	0.19 [ 4.8 ]
03	06	0.29 [ 7.4 ]
04	08	0.39 [ 9.9 ]
05	10	0.49 [ 12.4 ]
06	12	0.59 [ 15.0 ]
07	14	0.69 [ 17.5 ]
08	16	0.79 [ 20.1 ]
09	18	0.89 [ 22.6 ]
10	20	0.99 [ 25.1 ]
11	22	1.09 [ 27.7 ]
12	24	1.19 [ 30.2 ]
13	26	1.29 [ 32.8 ]
14	28	1.39 [ 35.3 ]
15	30	1.49 [ 37.8 ]
16	32	1.59 [ 40.4 ]
17	34	1.69 [ 42.9 ]
18	36	1.79 [ 45.5 ]
19	38	1.89 [ 48.0 ]
20	40	1.99 [ 50.5 ]
21	42	2.09 [ 53.1 ]
22	44	2.19 [ 55.6 ]
23	46	2.29 [ 58.2 ]
24	48	2.39 [ 60.7 ]
25	50	2.49 [ 63.2 ]
26	52	2.59 [ 65.8 ]
27	54	2.69 [ 68.3 ]
28	56	2.79 [ 70.9 ]
29	58	2.89 [ 73.4 ]
30	60	2.99 [ 75.9 ]
31	62	3.09 [ 78.5 ]
32	64	3.19 [ 81.0 ]
33	66	3.29 [ 83.6 ]
34	68	3.39 [ 86.1 ]
35	70	3.49 [ 88.6 ]
36	72	3.59 [ 91.2 ]
37	74	3.69 [ 93.7 ]
38	76	3.79 [ 96.3 ]
39	78	3.89 [ 98.8 ]
40	80	3.98 [ 101.1 ]

### Recommended Mounting Hole Pattern

Inch [mm]			
Tolerance Unless Noted			
	.0	.00	.000
Inch	± .1	± .01	± .005

[ ] Dimensions for Reference Only

### Notes:

- This part is molded in the 40 contact quantity version. Parts that require fewer contacts are broken to length. Dimension "C" is measured from a "Molded End" to the "Center of the Break Point" beyond the desired quantity. On Pin Strips, which have break points on both ends, "C" = .100" x contact quantity per row.
- The recommended PCB hole size for the kinked tail positions on the .112" solder tail connector is .035" ± .002. Refer to TS-0971 for the number of tails kinked and the position kinked.

## Ordering Information

### 24XX-6XXXTB

Pin Quantity:  
(See Table)  
One Row (01-40)  
Two Row (04-80)

Pin Length  
(Dim A)  
1 = .235"  
2 = .318"

Tail (Dim B)

One Row  
12=.112" Solder Tails  
13=.155" Solder Tails  
32=.112" Kinked Solder Tails

Two Row  
22=.112" Solder Tails  
23=.155" Solder Tails  
72=.112" Kinked Solder Tails

TS-0767-03  
Sheet 2 of 3

## 3M Interconnect Solutions Division

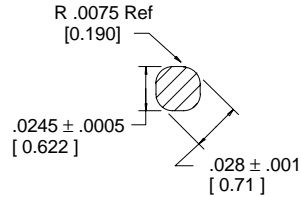
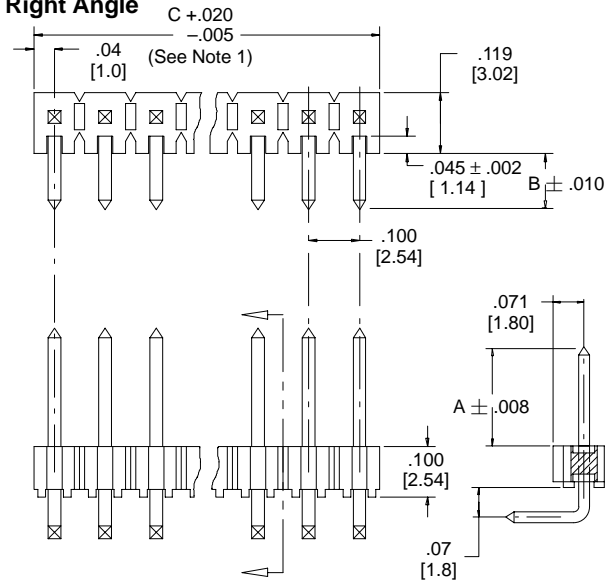
6801 River Place Blvd.  
Austin, TX 78726-9000

For technical, sales or ordering information call  
**800-225-5373**

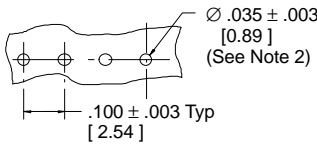
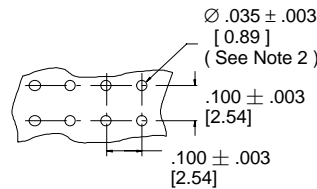
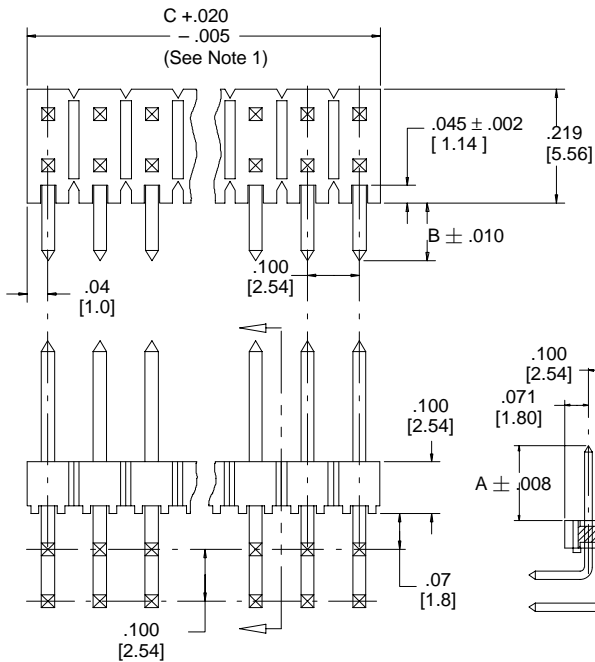
# .100" and .100" × .100" Pin Strip Header Straight & Right Angle, Solder Tail

2400 Series

## Right Angle



Pin Cross Section



Recommended Mounting Hole Pattern

Notes:

1. This part is molded in the 40 contact quantity version. Parts that require fewer contacts are broken to length. Dimension "C" is measured from a "Molded End" to the "Center of the Break Point" beyond the desired quantity. On Pin Strips, which have break points on both ends, "C" = .100" x contact quantity per row.
2. The recommended PCB hole size for the kinked tail positions on the .112" solder tail connector is .035" ± .002. Refer to ts-0971 for the number of tails kinked and the position kinked.

Inch  
[mm]

Tolerance Unless Noted			
	.0	.00	.000
Inch	± .1	± .01	± .005

[ ] Dimensions for Reference only

Pin Quantity		Dimension C
One Row	Two Row	
01	02	0.09 [ 2.3]
02	04	0.19 [ 4.8]
03	06	0.29 [ 7.4]
04	08	0.39 [ 9.9]
05	10	0.49 [12.4]
06	12	0.59 [15.0]
07	14	0.69 [17.5]
08	16	0.79 [20.1]
09	18	0.89 [22.6]
10	20	0.99 [25.1]
11	22	1.09 [27.7]
12	24	1.19 [30.2]
13	26	1.29 [32.8]
14	28	1.39 [35.3]
15	30	1.49 [37.8]
16	32	1.59 [40.4]
17	34	1.69 [42.9]
18	36	1.79 [45.5]
19	38	1.89 [48.0]
20	40	1.99 [50.5]
21	42	2.09 [53.1]
22	44	2.19 [55.6]
23	46	2.29 [58.2]
24	48	2.39 [60.7]
25	50	2.49 [63.2]
26	52	2.59 [65.8]
27	54	2.69 [68.3]
28	56	2.79 [70.9]
29	58	2.89 [73.4]
30	60	2.99 [75.9]
31	62	3.09 [78.5]
32	64	3.19 [81.0]
33	66	3.29 [83.6]
34	68	3.39 [86.1]
35	70	3.49 [88.6]
36	72	3.59 [91.2]
37	74	3.69 [93.7]
38	76	3.79 [96.3]
39	78	3.89 [98.8]
40	80	3.98 [101.1]

## Ordering Information

### 24XX-5XXXTB

Pin Quantity:  
(See Table)  
One Row (01-40)  
Two Row (02-80)

Pin Length  
(Dim A)  
1 = .235"  
2 = .318"

Tail (Dim B)  
One Row  
12=.112" Solder Tails  
13=.155" Solder Tails  
32=.112" Kinked Solder Tails

Two Row  
22=.112" Solder Tails  
23=.155" Solder Tails  
72=.112" Kinked Solder Tails

TS-0767-03  
Sheet 3 of 3

## 3M Interconnect Solutions Division

6801 River Place Blvd.  
Austin, TX 78726-9000

For technical, sales or ordering information call  
**800-225-5373**