

Monolithic crystal filter

MQF70.455-4000/07



Application

- 4 pol filter
- i.f.- filter
- use in mobile and stationary transceivers

Limiting values

		Unit	Value
Center frequency	f_0	MHz	70.455
Insertion loss		dB	≤ 6.0
Pass band at 3.0 dB		kHz	± 20.00
Ripple in pass band	$f_0 \pm 10.00$ kHz	dB	≤ 1.0
Stop band attenuation	$f_0 \pm 75$ kHz	dB	≥ 40
Alternate attenuation	$f_0 \pm 455$ kHz	dB	> 60
	$f_0 \pm 825 \dots 925$ kHz	dB	> 70
Spurious response		dB	> 40

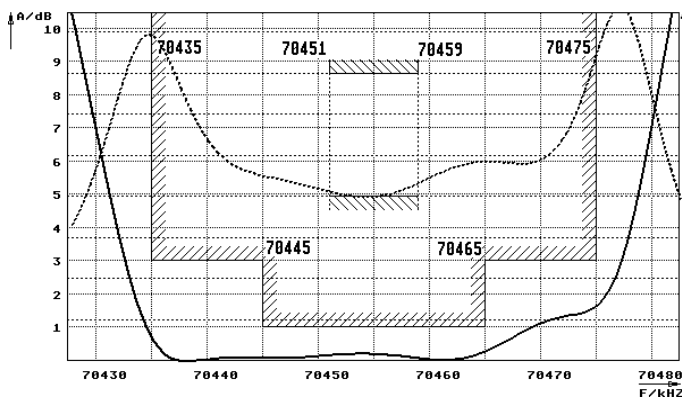
Terminating impedance Z

R1 C1	Ohm/pF	50 0
R2 C2	Ohm/pF	50 0

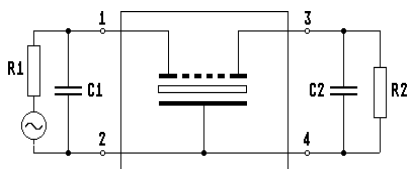
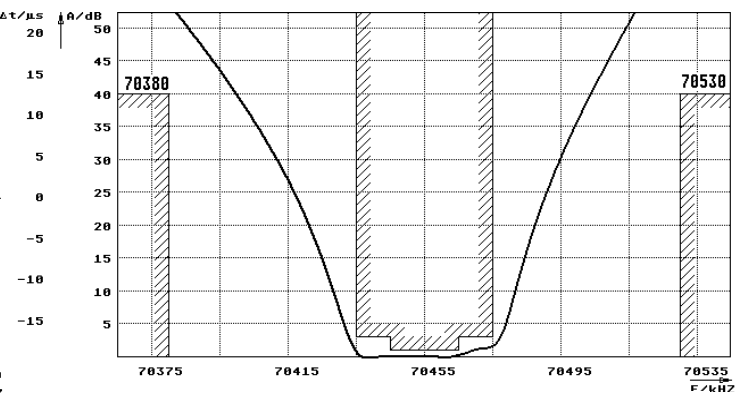
Operating temp. range ° C -40... +85

Characteristics MQF70.455-4000/07

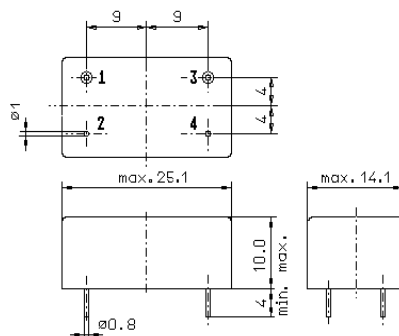
Pass band



Stop band



Pin connections: 1 Input
2 Input-E
3 Output
4 Output-E



GM3