

MRS SERIES

Miniature Rotary • Gold Contacts Available

A-25-09

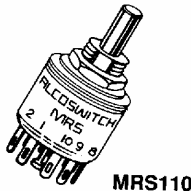
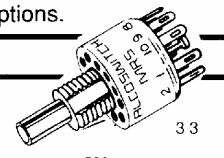
SPECIFICATIONS

Contacts: silver- silver plated Beryllium copper /gold available
Contact Rating: gold- 0.4 VA at 20 VDC max.
 silver- 150 mA at 115 VAC
Initial Contact Resistance: 20 milliohms max.
Contact Timing: non-shorting standard/shorting available
Insulation Resistance: 10,000 megohms min.
Dielectric Strength: 600 volts RMS at sea level
Life Expectancy: 25,000 operations
Operating Temperature: -20°C to +80°C (-4°F to +176°F)
Storage Temperature: -20°C to +100°C (-4°F to +212°F)

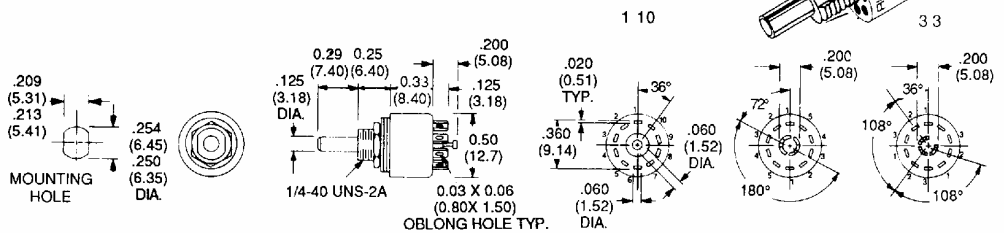
Case Material: zinc die cast
Actuator Material: stainless steel
Rotation Torque: 15 inch - ounce average
Plunger/Actuator Travel: 36°
Terminal Seal: insert molded
Process Seal: MRSE only
Terminals/Fixed Contacts: silver plated brass/gold available
High Torque Bushing Shoulder: N/A
Solder Heat Resistance: manual- 270°C for 3 seconds
 Note: Refer to page M36 for additional options.

NOTICE: Intermediate stop positions are easily made by properly orienting external stop ring.

36° ANGLE OF THROW

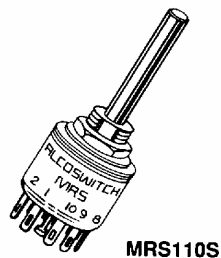


MRS110

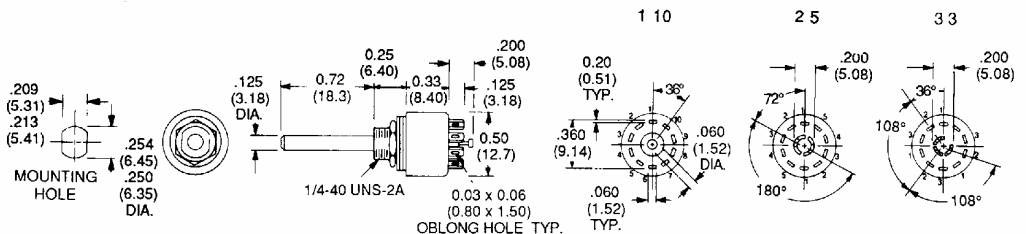


| MODEL | NO. POLES | MAXIMUM POSITIONS | SPECIAL DETAILS |
|----------|-----------|---------------------|-----------------|
| MRS110CS | 1 POLE | CONTINUOUS ROTATION | NON-SHORTING |
| MRS110 | 1 POLE | 2-10 ADJUSTABLE | NON-SHORTING |
| MRS25 | 2 POLES | 2-5 ADJUSTABLE | NON-SHORTING |
| MRS33 | 3 POLES | 2-3 ADJUSTABLE | NON-SHORTING |

36° ANGLE OF THROW

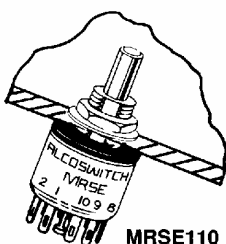


MRS110S

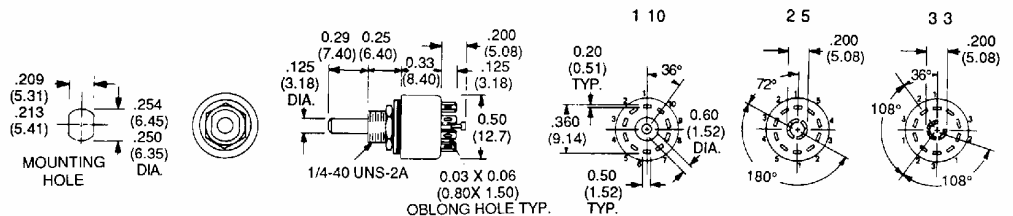


| MODEL | NO. POLES | MAXIMUM POSITIONS | SPECIAL DETAILS |
|----------|-----------|---------------------|-----------------|
| MRS110CS | 1 POLE | CONTINUOUS ROTATION | NON-SHORTING |
| MRS110S | 1 POLE | 2-10 ADJUSTABLE | NON-SHORTING |
| MRS25S | 2 POLES | 2-5 ADJUSTABLE | NON-SHORTING |
| MRS33S | 3 POLES | 2-3 ADJUSTABLE | NON-SHORTING |

SPLASHPROOF 36° ANGLE OF THROW



MRSE110



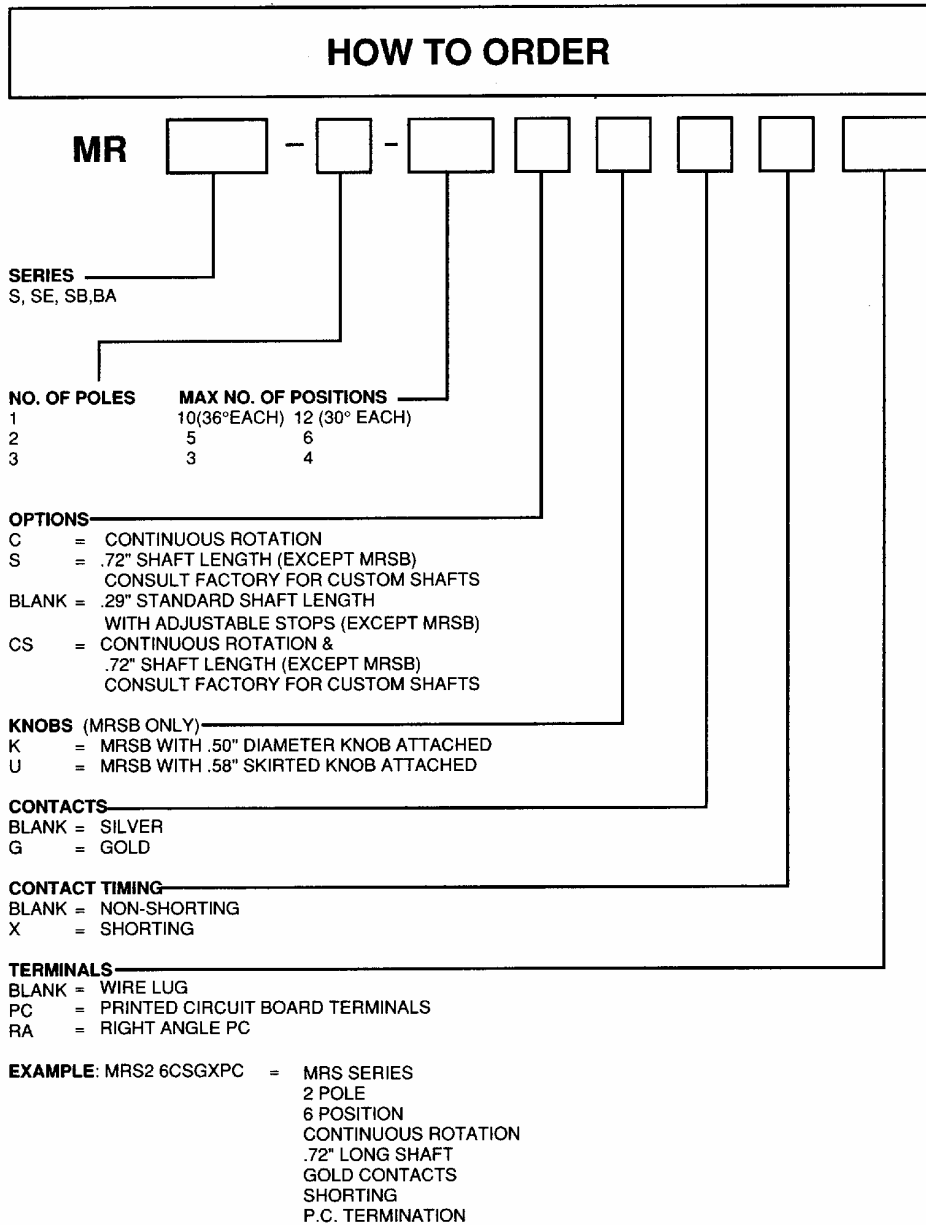
| MODEL | NO. POLES | MAXIMUM POSITIONS | SPECIAL DETAILS |
|---------|-----------|---------------------|-----------------|
| MRSE110 | 1 POLE | FIXED, 10 POSITIONS | NON-SHORTING |
| MRSE25 | 2 POLES | FIXED, 5 POSITIONS | NON-SHORTING |
| MRSE33 | 3 POLES | FIXED, 3 POSITIONS | NON-SHORTING |

SPECIFICATIONS SUBJECT TO CHANGE WITHOUT NOTICE.

ROTARY SWITCHES

MRS, MRSE, MRSB and MRBA

HOW TO ORDER INFORMATION



SPECIFICATIONS SUBJECT TO CHANGE WITHOUT NOTICE