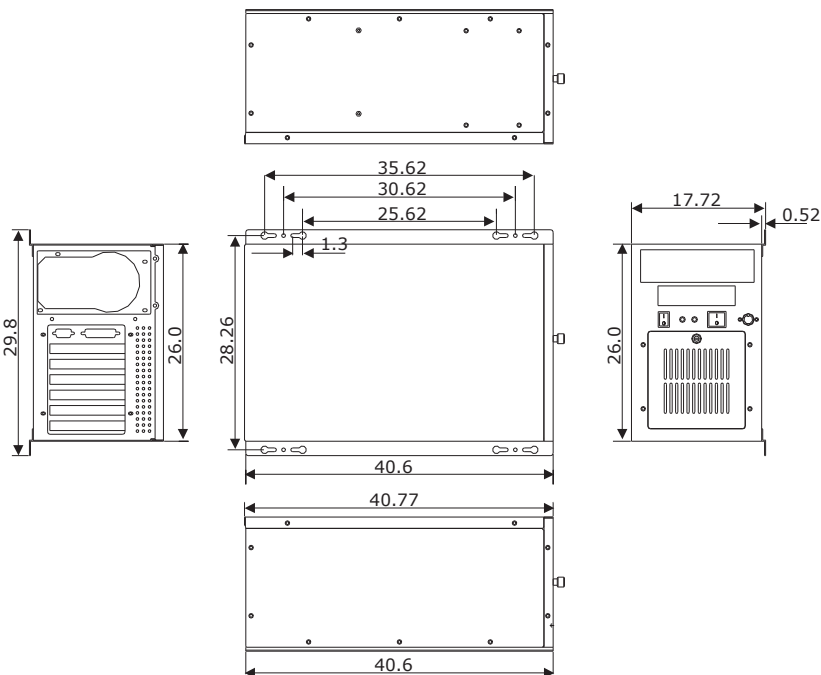
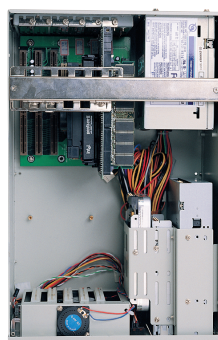


# Industrial Chassis RC-160

Full-size Wallmount Chassis with 6-slot Backplane & 250W P/S



## ■ Features

- 6-slot space for ISA, PCI-ISA, PICMG Bus SBC
- FCC/CE/UL/TUV 250W AC input range 85~265VAC power supply
- One anti-shock crowbar for secured mounting of add-on card, two adjustable positions
- One 5.25" CD-ROM and one 3.5" FDD; one 3.5" HDD spaces
- One 9cm ball bearing cooling fan
- FCC/CE industrial Class A approval

## ■ Front Side Description

At the front side, the RC-160 provides one power switch, two LED indicators, one reset switch, one fan switch and one keyboard connector. One 9cm ball bearing cooling fan also provides ventilation in the chassis from the front side. The RC-160 front panel also provides one 3.5" FDD and one 5.25" CD-ROM drive spaces.

## ■ Ordering Guide

- **RC-160W**  
Full-size Wallmount Chassis
- **RC-160W-6S**  
RC-160W Chassis w/HPCI-6S B/P
- **RC-160WA-6S**  
RC-160W Chassis w/HPCI-6S B/P, MPI-925A P/S
- **RC-160WB-6S**  
RC-160W Chassis w/HPCI-6S B/P, ZKS-250AE P/S

## ■ Specifications

- \***Chassis:** 6-slot full-size industrial chassis
- \***Drive Space:** One 3.5" FDD, one 5.25" CD-ROM; one 3.5" HDD spaces
- \***Thermal Solution:** One 9cm ball bearing cooling fan
- \***Altitude:** 15,000 feet
- \***Power Supply:** 250W AC input range 85~265VAC power supply
- \***Temperature:** 0~50°C (operating); 0~70°C (storage)
- \***Humidity:** 5~95%; non-condensing
- \***Safety Standard:** FCC/CE on chassis and FCC/CE/UL/TUV on power supply
- \***Dimensions:** 40.77(L) x 17.2(W) x 26.0(H) cm



ISO:9001  
Certification

Intel®  
Communications  
Alliance  
Affiliate Member

