

# SMB Termination

50Ω

DC to 6 GHz

**ROSE-50+**  
**ROSE-50**



CASE STYLE: LL604

## Maximum Ratings

Operating Temperature	-55°C to 100°C
Storage Temperature	-55°C to 100°C

## Features

- SMB plug with female center contact
- wideband, DC to 6 GHz
- rugged construction

Connector	Model	Price	Qty.
SMB-PLUG	ROSE-50(+)	\$9.95 ea.	(1-9)

**+ RoHS compliant in accordance with EU Directive (2002/95/EC)**

The +suffix identifies RoHS Compliance. See our web site for RoHS Compliance methodologies and qualifications.

## Applications

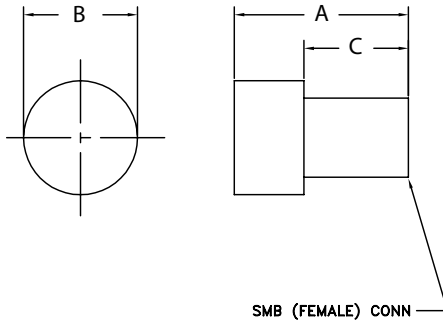
- cellular communications
- test set-up
- instrumentation
- PCS

## Electrical Specifications

MODEL NO.	FREQUENCY (GHz)	IMPEDANCE (OHMS)	RETURN LOSS (dB) MIN.			POWER RATING* (W)
			DC-2 GHz	DC-4 GHz	DC-6 GHz	
ROSE-50(+)	DC-6	50	30	23	20	0.50

\* At 70°C, derate linearly at 0.005W/°C to .35W at 100°C.

## Outline Drawing



SMB (FEMALE) CONN

## Outline Dimensions (inch mm)

A	B	C	wt.
			grams
.55	.36	.33	4.0
13.97	9.14	8.38	

## Typical Performance Data

FREQUENCY (MHz)	RETURN LOSS (dB)	
	$\bar{X}$	$\sigma$
1	69.84	5.51
100	70.87	3.71
200	65.00	3.39
500	50.04	4.93
1000	49.61	6.51
2000	45.48	5.09
3000	47.04	4.88
4000	35.88	3.04
5000	28.01	1.85
6000	24.18	1.56

