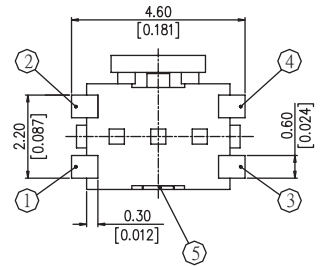
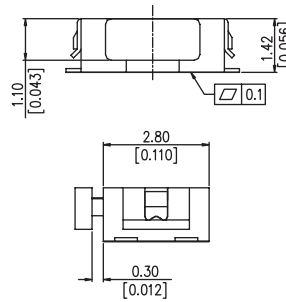
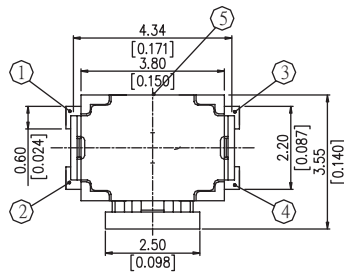


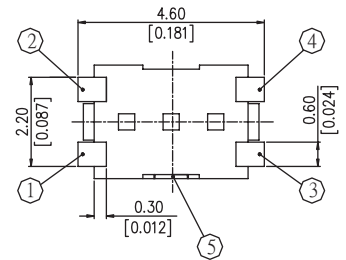
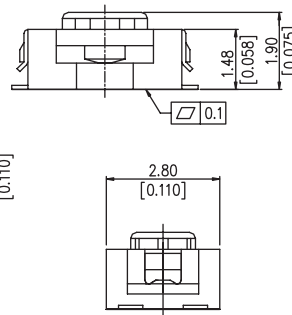
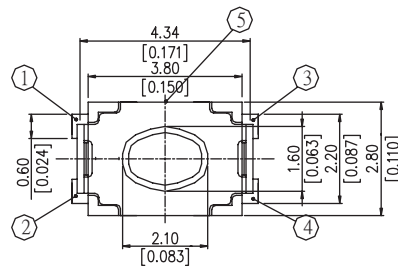
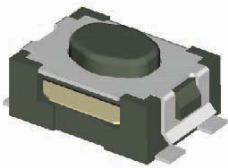
Tactile Switches

2.8x3.8mm Side/Vertical Push Tactile Switch

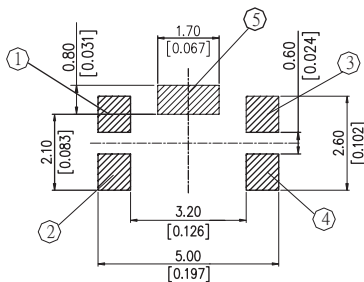
TP816 Series



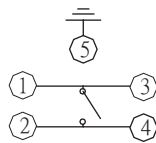
TP816S



TP816V



P.C.B LAYOUT



CIRCUIT

How to order



1 HEIGHT FOR ACTUATOR

- S Side Push
- V1 Vertical Push H: 1.9mm
- V2 Vertical Push H: 2.5mm

2 OPERATING FORCE:

- L 160gf (Only for Vertical Push)
- H 200gf (Only for Side Push)

3 COLOR OF ACTUATOR

- A Black
- B White

4 CONTACT MATERIAL:

- S Silver
- G Gold

5 PACKAGE:

- TR Tape & Reel

General Specifications:

MATERIALS

- » Cover: Stainless steel with silver plating
- » Spacing Cover: Stainless steel
- » Stem: LCP High-temp thermoplastic
Color: Black
- » Tape: Teflon
- » Contact: Stainless steel with silver plating
- » Base: LCP High-temp thermoplastic
Color: Black
- » Terminal: Brass, with silver plating
Brass, gold plated

MECHANICALS

- » Operation Force: 160± 50gf Vertical Push
220+80/-70gf Side Push
- » Stroke: 0.25+0.2/-0.1 mm
- » Operation Temperature: -30°C~80°C
- » Storage Temperature: -40°C~85°C

ELECTRICAL

- » Electrical Life: 100,000 cycles
- » Rating: 50mA, 12VDC
- » Contact Resistance: 100MΩ max.
- » Insulation Resistance: 100MΩ min. at 100VDC
- » Dielectric Strength: 100VAC/1 minute

SOLDERING PROCESS

- » Hand Soldering: Use a soldering iron of 30 watts, controlled st 350°C approximately while applying.
- » Reflow Soldering: When applying reflow soldering, the peak temperature or the reflow oven should be set to 260°C max

Reflow Temperature Profile:

