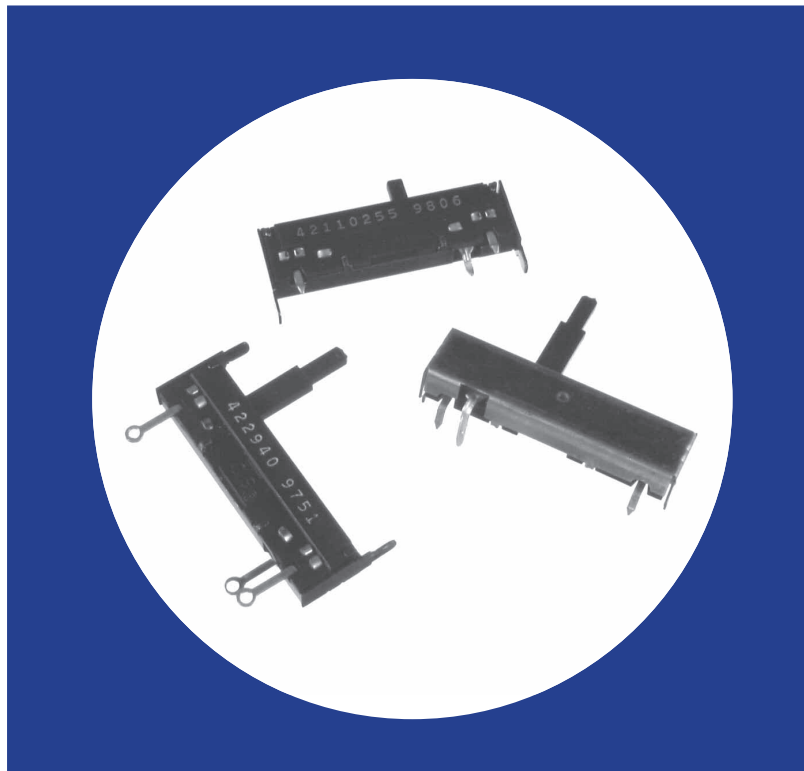


Linear Motion 1/4 Watt Composition Slide Controls

Features

- 1/4" (31.7mm) slider travel
- 1/4 watt power rating
- Choice of resistance tapers
- Economical
- Wide resistance range
- Choice of mounting styles
- RoHS compliant



Electrical and Mechanical Specifications

Resistance Range

200 ohms through 5 megohms

Resistance Tolerance

Standard: $\pm 20\%$
Available: $\pm 10\%$

Power Rating, Watts

1/4 watt @ 55°C derated to no load @ 85°C,
linear taper, control mounted on steel panel
4" x 4" x .050" (101.6mm x 101.6mm x 1.27mm).

Voltage Rating

Across end terminals:
Linear curves — 500 VDC
Tapered curves — 350 VDC
(Not to exceed wattage ratings)
Between case and end terminals:
1080 VAC RMS

Resistance Tapers

Standard: Linear
Special: Available upon request

Operating Temperature

0°C - +70°C

Slide Travel

Mechanical — 1/4 inches (31.7mm)
Effective — 1/4 inches (31.7mm)

Shaft Information

See illustrations, page 2.

Operating Force

Either direction 1 to 9 in-oz. (28 to 256 gf-cm)
Measured .250" (6.35mm) from base of slider.

Stop Strength

Maximum — 35 in-lbs. (15.9 kg-cm) measured
at base of slider.

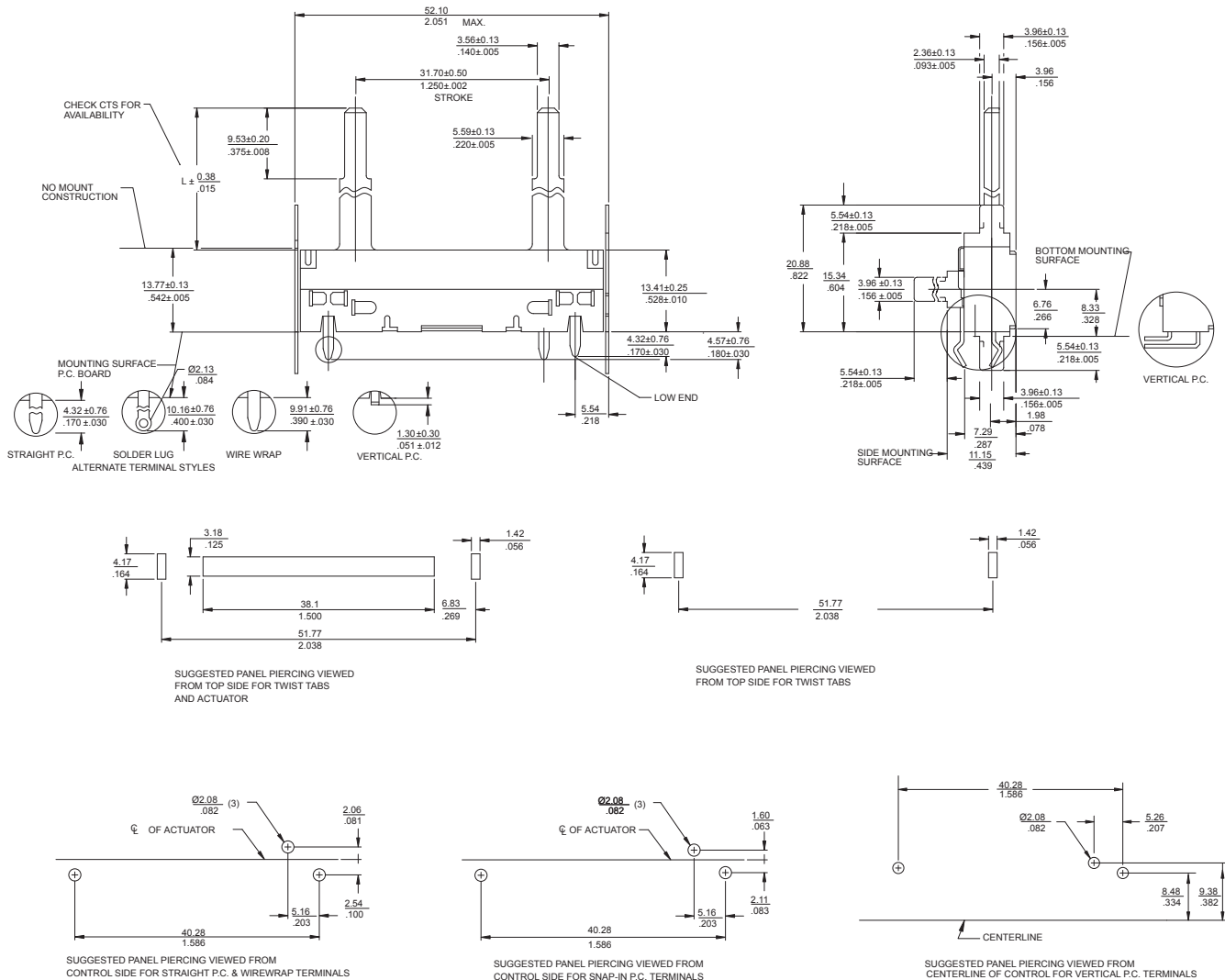
Terminal Information

Straight, vertical or snap-in to printed circuit board,
wirewrap or solder lug styles.

Mounting Information

Top, bottom, side or no twist tab mounting —
refer to illustrations, page 2.

CTS Series 442



DIMENSION: mm / INCH

Ordering Information

442 **T** **A** **2** **T** **103** **B** **D** **N**

MOUNTING STYLE T – TOP MOUNT B – BOTTOM MOUNT S – SIDE MOUNT N – NO MOUNTING TABS	TRAVEL A – 1.250" (31.7mm)	TERMINAL STYLE T – SOLDER LUG X – STRAIGHT P.C. W – WIREWRAP H – HOOK TYPE, SNAP-IN U – VERTICAL P.C.	RESIST TOL A – ±10% B – ±20% C – ±30%	SPECIALS N – NO SPECIALS C – CENTER DETENT																
ACTUATOR LENGTH 2 – .250" (6.35mm) 3 – .375" (9.53mm) 4 – .500" (12.7mm) 5 – .625" (15.9mm) 6 – .750" (19.1mm) 7 – .875" (22.2mm) 8 – 1.000" (25.4mm) R – .218" (5.54mm) S – .313" (7.98mm) T – .438" (11.13mm)	RESISTANCE CODE EXAMPLES <table border="1"> <thead> <tr> <th>CODE</th> <th>RESISTANCE</th> </tr> </thead> <tbody> <tr> <td>501</td> <td>500 OHMS</td> </tr> <tr> <td>102</td> <td>1K</td> </tr> <tr> <td>252</td> <td>2.5K</td> </tr> <tr> <td>502</td> <td>5K</td> </tr> <tr> <td>103</td> <td>10K</td> </tr> <tr> <td>253</td> <td>25K</td> </tr> <tr> <td>104</td> <td>100K</td> </tr> <tr> <td>105</td> <td>1MEG</td> </tr> </tbody> </table>	CODE	RESISTANCE	501	500 OHMS	102	1K	252	2.5K	502	5K	103	10K	253	25K	104	100K	105	1MEG	TAPER D – LINEAR A – CW 10% AUD B – CCW 10% AUD
CODE	RESISTANCE																			
501	500 OHMS																			
102	1K																			
252	2.5K																			
502	5K																			
103	10K																			
253	25K																			
104	100K																			
105	1MEG																			