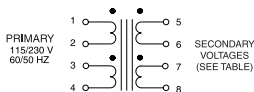
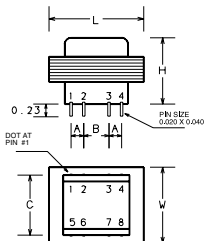


**HORIZONTAL SERIES Power Transformers**  
for printed circuit mounting.

- Six sizes: 1.1VA, 2.4VA, 6VA, 12VA, 20VA & 36VA ratings.
- Split bobbins for increased dielectric strength.
- 115/230 volts, 47/63 Hz primary windings.
- **CSA** listed (LR 47366) and **U.L.** recognized (E100878).



## MECHANICAL



PRIMARY  
115/230 V  
60/50 HZ

SECONDARY  
VOLTAGES  
(SEE TABLE)

## Dimensions, Inches

P/N	DIMENSIONS			PIN SPACINGS		
	L	W	H	A	B	C
4721	1.375	1.125	0.94	0.25	0.25	1.20
4722	1.375	1.125	1.18	0.25	0.25	1.20
4723	1.625	1.313	1.30	0.25	0.35	1.28
4724	1.875	1.563	1.42	0.30	0.40	1.41
4725	2.250	1.875	1.42	0.30	0.40	1.60
4726	2.625	2.188	1.57	0.40	0.40	1.85

## ELECTRICAL SPECIFICATION

Part No.	VA	Parallel		Series		Part No.	VA	Parallel		Series	
		Volts	Amps	Volts	Amps			Volts	Amps	Volts	Amps
4721-05	1.1	5	0.22	10	0.11	4724-05	12	5	2.40	10	1.20
4721-06	1.1	6.3	0.18	12.6	0.09	4724-06	12	6.3	2.00	12.6	1.00
4721-08	1.1	8	0.14	16	0.07	4724-08	12	8	1.60	16	0.80
4721-10	1.1	10	0.11	20	0.055	4724-10	12	10	1.20	20	0.60
4721-12	1.1	12	0.09	24	0.045	4724-12	12	12	1.00	24	0.50
4721-14	1.1	14	0.08	28	0.04	4724-14	12	14	0.84	28	0.42
4721-18	1.1	18	0.06	36	0.03	4724-18	12	18	0.70	36	0.35
4721-24	1.1	24	0.0046	48	0.023	4724-24	12	24	0.50	48	0.25
4722-05	2.4	5	0.50	10	0.25	4725-05	20	5	4.00	10	2.00
4722-06	2.4	6.3	0.40	12.6	0.20	4725-06	20	6.3	3.20	12.6	1.60
4722-08	2.4	8	0.30	16	0.15	4725-08	20	8	2.50	16	1.25
4722-10	2.4	10	0.24	20	0.12	4725-10	20	10	2.00	20	1.00
4722-12	2.4	12	0.20	24	0.10	4725-12	20	12	1.60	24	0.80
4722-14	2.4	14	0.17	28	0.085	4725-14	20	14	1.40	28	0.70
4722-18	2.4	18	0.13	36	0.065	4725-18	20	18	1.10	36	0.55
4722-24	2.4	24	0.10	48	0.050	4725-24	20	24	0.80	48	0.40
4723-05	6	5	1.20	10	0.60	4726-05	36	5	7.20	10	3.60
4723-06	6	6.3	1.00	12.6	0.50	4726-06	36	6.3	5.70	12.6	2.85
4723-08	6	8	0.80	16	0.40	4726-08	36	8	4.50	16	2.25
4723-10	6	10	0.60	20	0.30	4726-10	36	10	3.60	20	1.80
4723-12	6	12	0.50	24	0.25	4726-12	36	12	3.00	24	1.50
4723-14	6	14	0.40	28	0.20	4726-14	36	14	2.60	28	1.30
4723-18	6	18	0.34	36	0.17	4726-18	36	18	2.00	36	1.00
4723-24	6	24	0.25	48	0.125	4726-24	36	24	1.50	48	0.75

REV. D 4721.CHP 95/07/04