

**PLEASE CHECK WWW.MOLEX.COM FOR LATEST PART INFORMATION**

**Part Number:** [0477251340](#)  
**Status:** **Active**  
**Overview:** [mx150](#)  
**Description:** MX150™ Male 2x6 Panel Mount Connector, Key Option D, Charcoal Gray

**Documents:**

[Drawing \(PDF\)](#) [RoHS Certificate of Compliance \(PDF\)](#)

**General**

Product Family	Crimp Housings
Series	<a href="#">47725</a>
Overview	<a href="#">mx150</a>
Product Name	MX150™

**Physical**

Circuits (maximum)	12
Circuits Detail	12
Color - Resin	Gray (Charcoal)
Gender	Male
Glow-Wire Compliant	No
Keying to Mating Part	Yes
Lock to Mating Part	Yes
Number of Rows	2
Packaging Type	Bag
Panel Mount	Yes
Pitch - Mating Interface (in)	0.138 In
Pitch - Mating Interface (mm)	3.50 mm
Pitch - Term. Interface (in)	0.138 In
Pitch - Term. Interface (mm)	3.50 mm
Polarized to Mating Part	Yes
Temperature Range - Operating	-40°C to +125°C

**Electrical**

Current - Maximum per Contact	22A
-------------------------------	-----

**Material Info**

**Reference - Drawing Numbers**

Packaging Specification	PK-47725-001
Sales Drawing	SD-47725-130



*image - Reference only*

**EU RoHS**

**ELV and RoHS  
Compliant**  
**REACH SVHC**  
 Not Reviewed  
**Halogen-Free  
Status**  
 Not Reviewed

**China RoHS**



**Need more information on product  
environmental compliance?**

Email [productcompliance@molex.com](mailto:productcompliance@molex.com)  
 For a multiple part number RoHS Certificate of  
 Compliance, [click here](#)

Please visit the [Contact Us](#) section for any  
 non-product compliance questions.

**Search Parts in this Series**

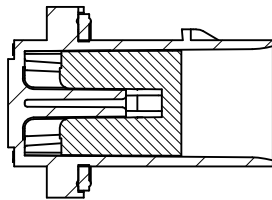
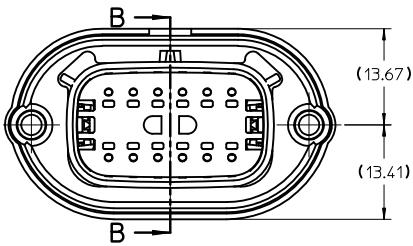
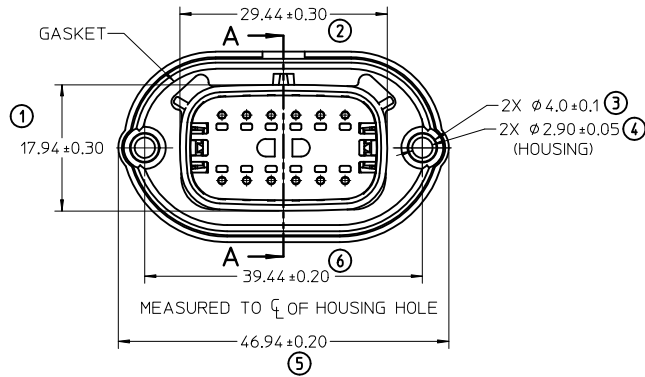
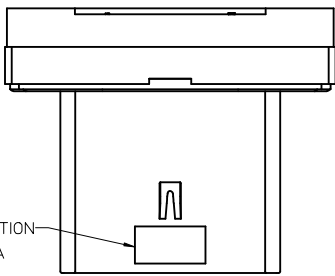
[47725Series](#)

**Mates With**

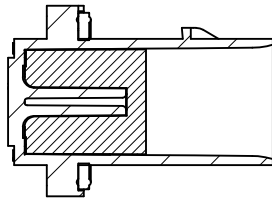
[33472 MX150™ Sealed Female Connector](#)

**PLEASE CHECK WWW.MOLEX.COM FOR LATEST PART INFORMATION**

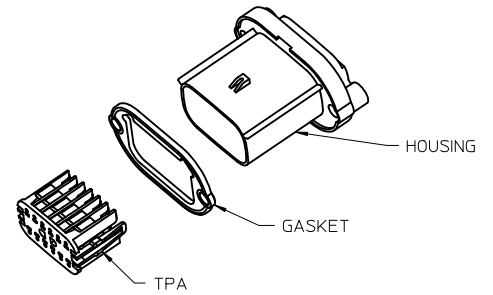
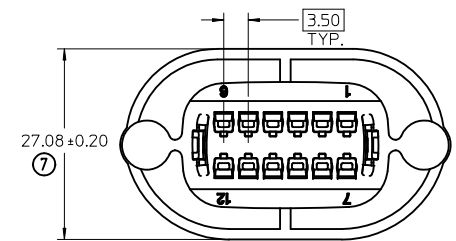
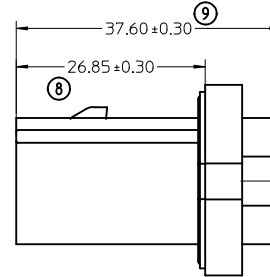
TRACEABILITY INFORMATION  
LOCATION IN THIS AREA



SECTION A-A  
(TPA SHOWN IN PRE-LOCK POSITION)  
SEE NOTE 3



SECTION B-B  
(TPA SHOWN IN FULL-LOCK POSITION)  
FOR REFERENCE ONLY



ASSY. P/N	KEY OPTION	DESCRIPTION	COLOR
477251310	A	HOUSING	BLACK
		GASKET	GRAY
		TPA	NATURAL
477251330	C	HOUSING	DARK GRAY
		GASKET	GRAY
		TPA	NATURAL
477251340	D	HOUSING	STONE GRAY
		GASKET	GRAY
		TPA	NATURAL

ENTER DESCRIPTION	QUALITY SYMBOLS
EC NO: GCA2010-0081	▽=0
DRWN:CDZHANG 2010/03/31	∇=0
CHKD:LOHMAN 2009/05/18	
APPR:GGLLEE 2010/04/01	
REV	

GENERAL TOLERANCES (UNLESS SPECIFIED)	
	INCH
4 PLACES	± .005
3 PLACES	± .004
2 PLACES	± .003
1 PLACE	± .002
ANGULAR ± 3 °	

DIMENSION STYLE	
MM ONLY	
DRAWN BY	DATE
CDZHANG	2009/05/18
CHECKED BY	DATE
SPCAO	2009/05/18
APPROVED BY	DATE
GGLLEE	2010/03/31

SCALE	DESIGN UNITS	THIRD ANGLE PROJECTION
2:1	METRIC	☉
TITLE		
GENERAL MX150 2X6 PANEL MOUNT CONNECTOR		
MATERIAL NO. SEE CHART		
DOCUMENT NO. SD-47725-130		
SHEET NO.		1 OF 1

- NOTES: UNLESS OTHERWISE SPECIFIED.
- SHALL CONFORM TO MOLEX PRODUCT SPECIFICATION: PS-47725-000
  - USAGE OF THE PRODUCT SHALL BE IN COMPLIANCE TO MOLEX APPLICATION SPECIFICATION: AS-47725-001
  - SHIPPED WITH GASKET AND TPA IN PRE-LOCK POSITION
  - FOR ESSENTIAL PARTS (TERMINALS, WIRES ETC.) AND INSTALLATION TO COMPLETE ASSEMBLY SEE MOLEX PRODUCT SPECIFICATION: PS-33472-000.
  - FOR TERMINAL SERVICING TOOL SEE MOLEX DOCUMENT: ATS-638131500, GM PART NUMBER J-38125-217
  - DESIGNED TO MATE WITH 12 WAY RECEPTACLE CONNECTOR ASSEMBLY PER SD-33472-121. FOR MATING CONNECTOR ASSEMBLY INFORMATION SEE MOLEX PRODUCT SPECIFICATION: PS-33472-000