

**PLEASE CHECK WWW.MOLEX.COM FOR LATEST PART INFORMATION**

**Part Number:** [0579206002](#)  
**Status:** **Active**  
**Description:** 2.29mm (.090") Diameter Pin Cluster Block Connector Terminal, Wire Range AWG 16-18

**Documents:**

[Drawing \(PDF\)](#) [Product Specification PS-68422-001 \(PDF\)](#)  
[Product Specification PS-35573-001 \(PDF\)](#) [RoHS Certificate of Compliance \(PDF\)](#)

**General**

Product Family	Crimp Terminals
Series	<a href="#">57920</a>
Crimp Quality Equipment	Yes
Product Name	N/A

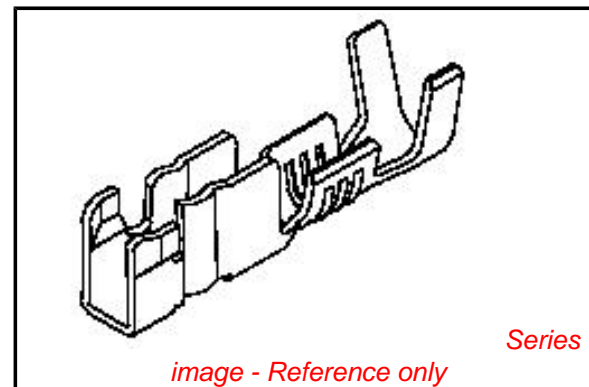
**Physical**

Durability (mating cycles max)	10
Gender	Female
Material - Metal	Phosphor Bronze
Material - Plating Mating	Tin
Material - Plating Termination	Tin
Packaging Type	Reel
Wire Insulation Diameter	2.15-2.45
Wire Size AWG	16, 18
Wire Size mm <sup>2</sup>	N/A

**Material Info**

**Reference - Drawing Numbers**

Product Specification	PS-35573-001, PS-68422-001
Sales Drawing	SD-57920-001



**EU RoHS**

**ELV and RoHS  
Compliant**  
**REACH SVHC  
Contains SVHC: No**  
**Halogen-Free  
Status**

**China RoHS**



**Need more information on product  
environmental compliance?**

Email [productcompliance@molex.com](mailto:productcompliance@molex.com)  
For a multiple part number RoHS Certificate of Compliance, [click here](#)

Please visit the [Contact Us](#) section for any non-product compliance questions.

**Search Parts in this Series**

[57920Series](#)

**Use With**

[35573](#) , [68422](#) Housing

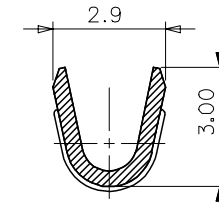
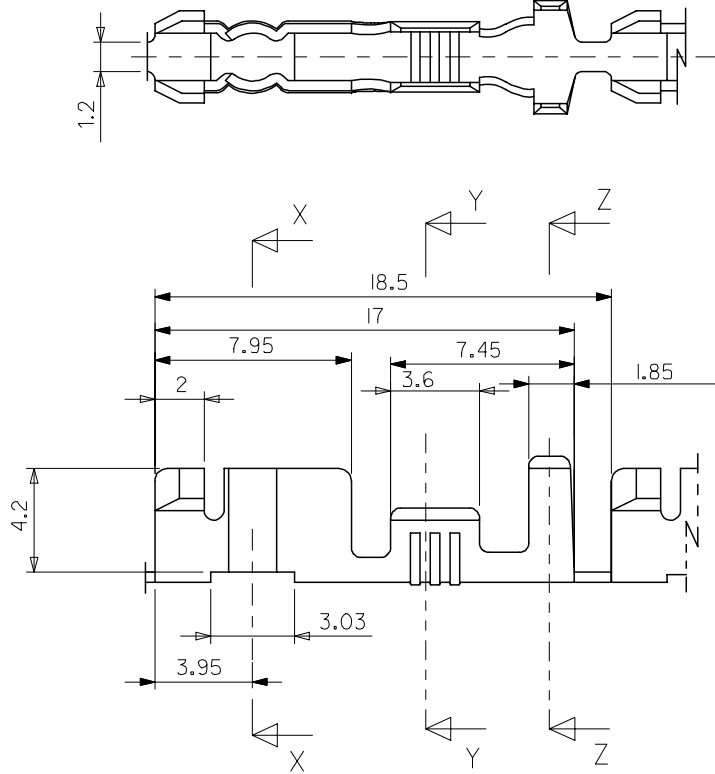
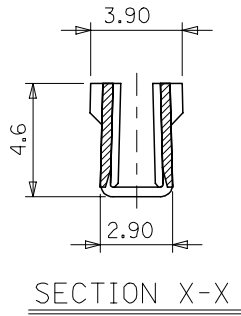
DO NOT SCALE DRAWING  
DIMENSION IN METRIC

DWG. IO.  
SD-57920-001

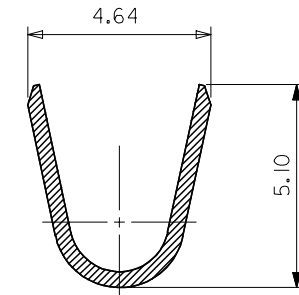
SIMILAR ITEM

PROJECT NO.

MATERIAL NO.	ENGINEERING NO.
579206002	57920-6002



SECTION Y-Y  
(SCALE: 8:1)



SECTION Z-Z  
(SCALE: 8:1)

NOTES

1. MATERIALS : PHOSPHER BRONZE, 0.4mm THICK
2. FINISH : TIN-PLATING
3. APPLICABLE WIRE : AWG#18-16

NEW RELEASED EC NO. KOR2002-0093 DRWN: C.B.CHIN 02/03/21 CHK: W.Y.YANG APPR: C.W.LEE	QUALITY SYMBOLS MAJOR = 0 CRITICAL = 0	GENERAL TOLERANCES: (UNLESS SPECIFIED)		SCALE 5:1	DESIGN UNITS <input checked="" type="checkbox"/> mm <input type="checkbox"/> INCH	THIRD ANGLE PROJECTION	DIMENSIONS: <input type="checkbox"/> mm <input type="checkbox"/> INCH <input type="checkbox"/> mm <input checked="" type="checkbox"/> mm ONLY	SHT	REV
		4 PLACES	±0.	±.	DRAWN BY & DATE W.Y.YANG 99/11/13	TITLE: CLUSTER TERMINAL (2.29 DIA. PIN)			
A	DESCRIPTION	3 PLACES	±0.25	±.	CHECKED BY & DATE B.K.CHOI 99/11/13	MOLEX INCORPORATED			
		1 PLACE	±0.25	±.	APPROVED BY & DATE C.W.LEE 99/11/13	MATERIAL NO. SEE CHART	DRAWING NO. SD-57920-001	SHEET NO. 10F1	SIZE B
DRAFT WHERE APPLICABLE MUST REMAIN WITHIN DIMENSIONS		ANGULAR: ± °			THIS DRAWING CONTAINS INFORMATION THAT IS PROPRIETARY TO MOLEX INCORPORATED AND SHOULD NOT BE USED WITHOUT WRITTEN PERMISSION.				MX-A3