

**PLEASE CHECK WWW.MOLEX.COM FOR LATEST PART INFORMATION**

**Part Number:** [0674912026](#)  
**Status:** **Active**  
**Overview:** [serial\\_ata\\_products](#)  
**Description:** 1.27mm (.050") Pitch Serial ATA High Speed Header, Through Hole, Vertical, 7 Circuits, 0.76µm (30µ") Gold (Au) Selective Plating, with 2.35mm (.093") PC Tail Length, Blue Housing, Lead-free

**Documents:**

[3D Model](#) [Product Specification PS-67491-001 \(PDF\)](#)  
[Drawing \(PDF\)](#) [RoHS Certificate of Compliance \(PDF\)](#)

**General**

Product Family PCB Headers  
 Series [67491](#)  
 Application Board-to-Board, Wire-to-Board  
 Overview [serial\\_ata\\_products](#)  
 Product Name Serial ATA

**Physical**

Breakaway No  
 Circuits (Loaded) 7  
 Color - Resin Blue  
 Durability (mating cycles max) 50  
 First Mate / Last Break Yes  
 Glow-Wire Compliant No  
 Guide to Mating Part No  
 Keying to Mating Part Yes  
 Lock to Mating Part Yes  
 Material - Plating Mating Gold  
 Material - Plating Termination Tin  
 Number of Rows 1  
 Orientation Vertical  
 PC Tail Length (in) 0.093 In  
 PC Tail Length (mm) 2.35 mm  
 PCB Locator Yes  
 PCB Retention Yes  
 Packaging Type Tray  
 Pitch - Mating Interface (in) 0.050 In  
 Pitch - Mating Interface (mm) 1.27 mm  
 Pitch - Term. Interface (in) 0.050 In  
 Pitch - Term. Interface (mm) 1.27 mm  
 Plating min: Mating (µin) 30  
 Plating min: Mating (µm) 0.76  
 Plating min: Termination (µin) 50.8  
 Plating min: Termination (µm) 1.27  
 Polarized to Mating Part Yes  
 Polarized to PCB Yes  
 Shrouded No  
 Stackable No  
 Surface Mount Compatible (SMC) No  
 Temperature Range - Operating -35°C to +85°C  
 Termination Interface: Style Through Hole

**Electrical**

Current - Maximum per Contact 1.5A  
 Voltage - Maximum 15V DC

**EU RoHS**  
**ELV and RoHS**  
**Compliant**  
**REACH SVHC**  
**Not Reviewed**  
**Halogen-Free**  
**Status**  
**Not Reviewed**

**China RoHS**



**Need more information on product environmental compliance?**

Email [productcompliance@molex.com](mailto:productcompliance@molex.com)  
 For a multiple part number RoHS Certificate of Compliance, [click here](#)

Please visit the [Contact Us](#) section for any non-product compliance questions.

**Search Parts in this Series**  
[67491Series](#)

**Mates With**  
 Serial ATA Signal Connector [67489](#) , [88755](#)

**Material Info**

**Reference - Drawing Numbers**

Product Specification

PS-67491-001

Sales Drawing

SD-67491-001

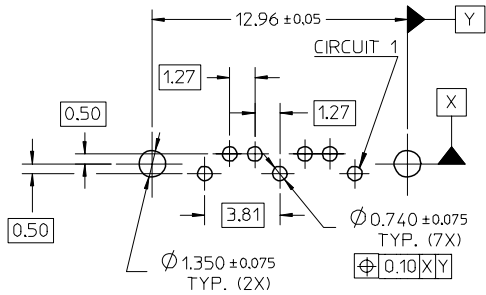
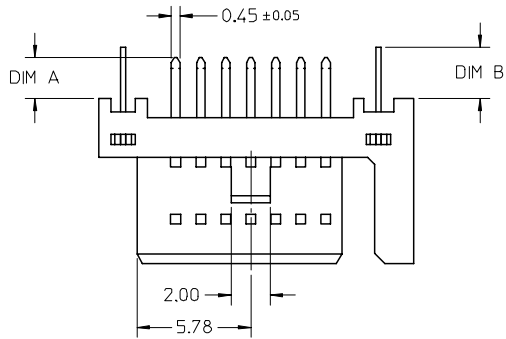
This document was generated on 05/25/2010

**PLEASE CHECK [WWW.MOLEX.COM](http://WWW.MOLEX.COM) FOR LATEST PART INFORMATION**

10 9 8 7 6 5 4 3 2 1

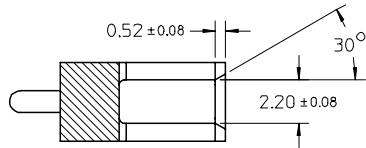
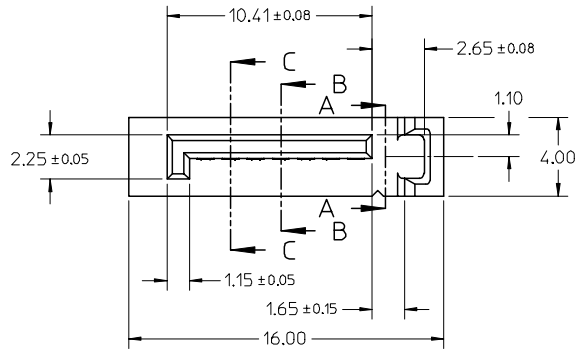
F  
E  
D  
C  
B  
A

F  
E  
D  
C  
B  
A

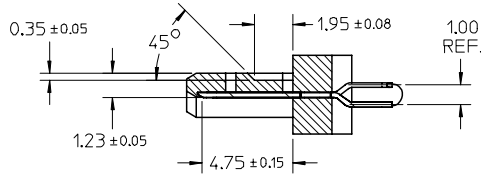


RECOMMENDED P.C.B. LAYOUT (T=1.6mm/2.0mm/2.4mm)

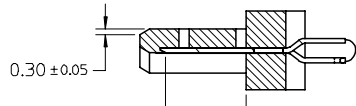
- NOTES:
- MATERIAL:  
HOUSING: THERMAL PLASTIC, UL94V-0, COLOR: SEE SHEET2  
TERMINAL/PEG: COPPER ALLOY, THICKNESS=0.25MM
  - TERMINAL PLATING:  
CONTACT AREA: (a) GOLD FLASH  
(b) 0.76 MICRON GOLD PLATED  
(c) 0.38 MICRON GOLD PLATED
  - SOLDER TAIL:  
1.27 MICRON MIN. MATTE TIN PLATED  
UNDER PLATE:  
1.27 MICRON MIN. NICKEL PLATED
  - PEG PLATING:  
1.27 MICRON MIN. MATTE TIN PLATED OVERALL  
1.27 MICRON MIN. NICKEL UNDER PLATED
  - PACKAGING SPECIFICATION REFER TO PK-67491-001
  - PRODUCT SPECIFICATION REFER TO PS-67491-001
  - MATING PART: 67489
  - RECOMMENDED PROCESS: WAVE SOLDERING



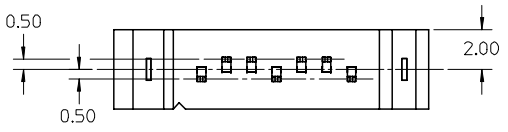
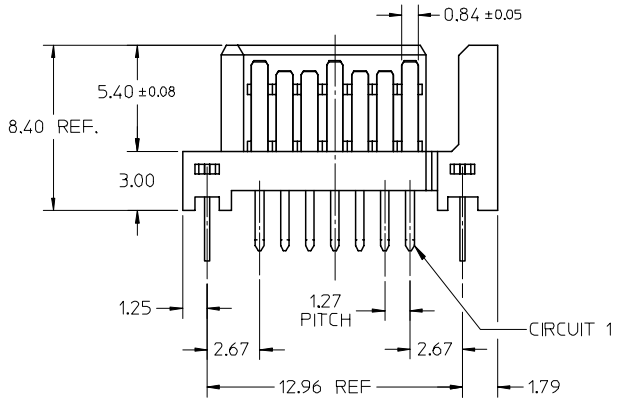
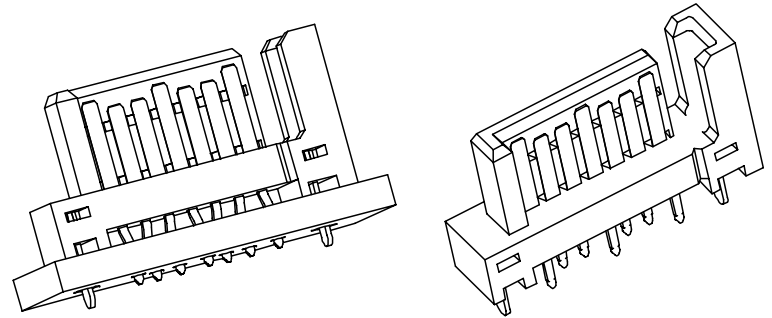
SECTION A-A



SECTION B-B



SECTION C-C



|   |                               |   |                      |                            |                              |                        |                        |                    |  |
|---|-------------------------------|---|----------------------|----------------------------|------------------------------|------------------------|------------------------|--------------------|--|
| ADD PART NUMBER<br>EC NO: SH2007-0895<br>DRWN: BCHENZ6<br>CHKD: JTIAN<br>APPR: INCHEM<br>2007/06/15<br>2007/06/18<br>2007/06/22 | QUALITY SYMBOLS<br>▽=0<br>▽=0 | GENERAL TOLERANCES (UNLESS SPECIFIED)   |                      | DIMENSION STYLE<br>MM ONLY | SCALE<br>4:1                 | DESIGN UNITS<br>METRIC | THIRD ANGLE PROJECTION |                    |  |
|   |                               | 4 PLACES ± --- ± ---  | 3 PLACES ± --- ± --- | 2 PLACES ± 0.15 ± ---      | 1 PLACE ± 0.25 ± ---         | ANGULAR ± 3 °          | DRAWN BY<br>GRATE MA   | DATE<br>2004/02/02 | TITLE<br>1.27MM HIGH SPEED PLUG<br>VERTICAL TYPE |
|   |                               | DRAFT WHERE APPLICABLE<br>MUST REMAIN<br>WITHIN DIMENSIONS  |                      | MATERIAL NO.<br>SEE SHEET2 | DOCUMENT NO.<br>SD-67491-001 | SHEET NO.<br>1 OF 2    |                        |                    |  |
|   |                               | THIS DRAWING CONTAINS INFORMATION THAT IS PROPRIETARY TO MOLEX INCORPORATED AND SHOULD NOT BE USED WITHOUT WRITTEN PERMISSION |                      |                            |                              |                        |                        |                    |  |

9 8 7 6 5 4 3 2 1

|            | 10            | 9             | 8       | 7       | 6                                   | 5                        | 4      | 3 | 2 | 1 |  |  |
|------------|---------------|---------------|---------|---------|-------------------------------------|--------------------------|--------|---|---|---|--|--|
|            | P/N           | PLATING TYPE  | DIM "A" | DIM "B" | COLOR                               | SOLDE AREA PLATING       |        |   |   |   |  |  |
| F          | 67491-0020    | SEE NOTE 2(a) | 2.05    | 2.57    | BLACK                               | PURE TIN<br>MATTE FINISH | ▽<br>G |   |   |   |  |  |
|            | 67491-0021    | SEE NOTE 2(b) |         |         |                                     |                          |        |   |   |   |  |  |
|            | 67491-0022    | SEE NOTE 2(c) |         |         |                                     |                          |        |   |   |   |  |  |
|            | 67491-0025    | SEE NOTE 2(a) | 2.35    |         |                                     |                          |        |   |   |   |  |  |
|            | 67491-0026    | SEE NOTE 2(b) |         |         |                                     |                          |        |   |   |   |  |  |
| 67491-0027 | SEE NOTE 2(c) |               |         |         |                                     |                          |        |   |   |   |  |  |
| E          | 67491-2020    | SEE NOTE 2(a) | 2.05    | 3.20    | BLUE<br>PANTONE<br>NO. 293C<br>ΔE<3 |                          |        |   |   |   |  |  |
|            | 67491-2021    | SEE NOTE 2(b) |         |         |                                     |                          |        |   |   |   |  |  |
|            | 67491-2022    | SEE NOTE 2(c) |         |         |                                     |                          |        |   |   |   |  |  |
|            | 67491-2025    | SEE NOTE 2(a) | 2.35    |         |                                     |                          |        |   |   |   |  |  |
|            | 67491-2026    | SEE NOTE 2(b) |         |         |                                     |                          |        |   |   |   |  |  |
| 67491-2027 | SEE NOTE 2(c) |               |         |         |                                     |                          |        |   |   |   |  |  |
| D          | 67491-3010    | SEE NOTE 2(a) | 3.00    | 3.20    | BLACK                               |                          |        |   |   |   |  |  |
|            | 67491-3011    | SEE NOTE 2(b) |         |         |                                     |                          |        |   |   |   |  |  |
|            | 67491-3012    | SEE NOTE 2(c) |         |         |                                     |                          |        |   |   |   |  |  |
|            | 67491-3110    | SEE NOTE 2(a) | 3.00    |         |                                     |                          |        |   |   |   |  |  |
|            | 67491-3111    | SEE NOTE 2(b) |         |         |                                     |                          |        |   |   |   |  |  |
| 67491-3112 | SEE NOTE 2(c) |               |         |         |                                     |                          |        |   |   |   |  |  |

|   |  |                    |                               |  |              |  |                    |  |                        |                              |                     |  |  |
|---|--|--------------------|-------------------------------|--|--------------|--|--------------------|--|------------------------|------------------------------|---------------------|--|--|
| <b>ADD PART NUMBER</b><br>EC NO: SH2007-0895<br>DRWN: B. CHENZ6<br>CHKD: J. TIAN<br>APPR: J. CHEN | 2007/06/15<br>2007/06/18<br>2007/06/22 | DESCRIPTION<br>REV | QUALITY SYMBOLS<br>▽=0<br>▽=0 | GENERAL TOLERANCES (UNLESS SPECIFIED)  |              | DIMENSION STYLE<br>MM ONLY                                 |                    | SCALE<br>4:1   | DESIGN UNITS<br>METRIC | THIRD ANGLE PROJECTION       |                     |  |  |
|   |  |                    |                               | 4 PLACES ± --- ± ---<br>3 PLACES ± --- ± ---<br>2 PLACES ± 0.15 ± ---<br>1 PLACE ± 0.25 ± ---<br>ANGULAR ± 3 ° | mm      INCH | DRAWN BY<br>GRATE MA                                       | DATE<br>2004/02/02 | TITLE<br>1.27MM HIGH SPEED PLUG<br>VERTICAL TYPE   |                        |                              |                     |  |  |
|   |  |                    |                               |  |              | CHECKED BY<br>YA JUN                                       | DATE<br>2004/02/02 | MOLEX INCORPORATED   |                        |                              |                     |  |  |
|   |  |                    |                               |  |              | APPROVED BY<br>SAM   | DATE<br>2004/02/02 | MATERIAL NO.<br>SEE TABLE  |                        | DOCUMENT NO.<br>SD-67491-001 | SHEET NO.<br>2 OF 2 |  |  |
|   |  |                    |                               |  |              | DRAFT WHERE APPLICABLE<br>MUST REMAIN<br>WITHIN DIMENSIONS | SIZE<br>A3         | THIS DRAWING CONTAINS INFORMATION THAT IS PROPRIETARY TO MOLEX<br>INCORPORATED AND SHOULD NOT BE USED WITHOUT WRITTEN PERMISSION |                        |                              |                     |  |  |