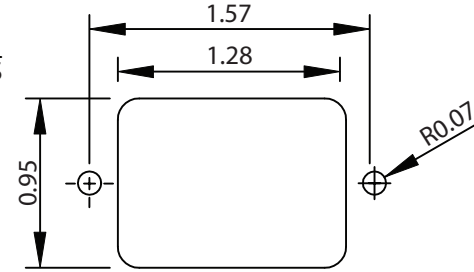
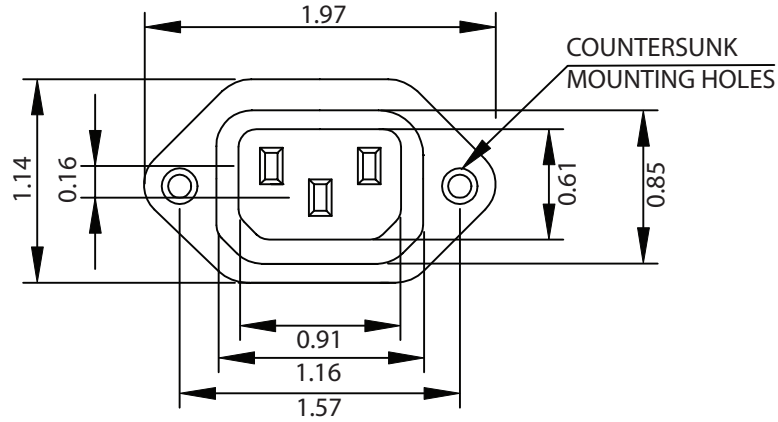
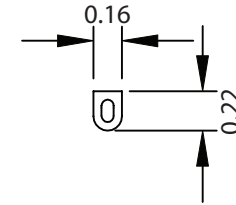
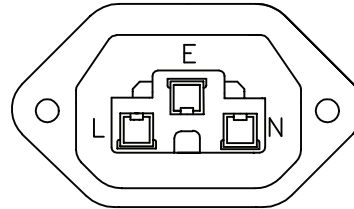
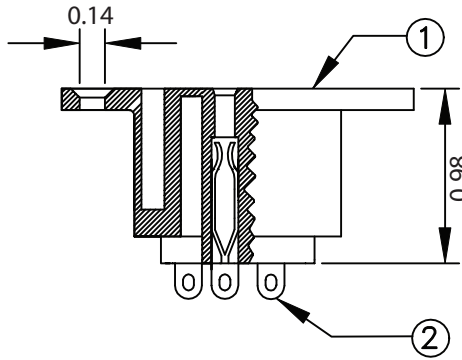


THESE DRAWINGS ARE THE PROPERTY OF QUALTEK ELECTRONICS AND NOT TO BE REPRODUCED FOR OR COMMUNICATED TO A THIRD PARTY WITHOUT THE EXPRESS WRITTEN PERMISSION OF AN OFFICER OF QUALTEK ELECTRONICS.

REVISION			
REV.	DESCRIPTION	DATE	APPROVED
B	RoHS Compliancy	06-01-06	DP



PANEL CUTOUT



**CONTROLLED**

NOTES:

MATERIAL:

HOUSING: THERMOPLASTIC  
TERMINAL: COPPER ALLOY

RATING: 15A 250V AC

INSULATION RESISTANCE: OVER 100 OHM 500V DC

DIELECTRIC STRENGTH: 2000V AC ONE MINUTE

APPROVALS: UL, CSA, VDE

RoHS COMPLIANT

2	Contact PIN Bronze Strip t=0.8mm Tin-Plated	3
1	Housing Thermoplastic	1
<b>Qualtek Electronics Corp.</b> PPC DIVISION		
Dim range (mm)	Tolerance +/- (mm)	Part Number: 710W-00/01 <span style="border: 1px solid green; padding: 2px;">RoHS Compliant</span>
0-1	0.15	Description: AC RECEPTACLE
1-6	0.20	
6-18	0.30	UNIT: in
18-50	0.50	
50-120	0.70	REV. B
120-250	0.90	
250-500	1.20	Drawn / Date: B.ZHANG 01-14-05
		Checked / Date: 01-14-05
		Approved / Date: JJH / 01-14-05