

PLEASE CHECK WWW.MOLEX.COM FOR LATEST PART INFORMATION

Part Number: **0712435100**
Status: **Active**
Description: 1.27mm (.050") Pitch DDR DIMM Socket, Single Key, Vertical, Plastic Peg, 184 Circuits

Documents:

[3D Model](#) [Product Specification PS-71243-9999 \(PDF\)](#)
[Drawing \(PDF\)](#) [RoHS Certificate of Compliance \(PDF\)](#)
[Packaging Specification \(PDF\)](#)

General

Product Family	Memory Module Sockets
Series	71243
Comments	With Short Latches
Component Type	Memory Module
JEDEC Outline	N/A
Product Name	DIMM

Physical

Circuits (Loaded)	184
Circuits (maximum)	184
Color - Resin	Black, Natural
Durability (mating cycles max)	25
Entry Angle	Vertical (Top Entry)
Function Key	None
Keying to Mating Part	Yes
Material - Metal	Phosphor Bronze, Stainless Steel
Material - Plating Mating	Gold
Material - Plating Termination	Tin
Material - Resin	High Temperature Thermoplastic
PC Tail Length (in)	0.127 In
PC Tail Length (mm)	3.23 mm
PCB Locator	Yes
PCB Retention	Yes
PCB Thickness Recommended (in)	0.062 In
PCB Thickness Recommended (mm)	1.57 mm
Packaging Type	Tray
Pitch - Mating Interface (in)	0.050 In
Pitch - Mating Interface (mm)	1.27 mm
Pitch - Term. Interface (in)	0.050 In
Pitch - Term. Interface (mm)	1.27 mm
Plating min: Mating (µin)	2
Plating min: Mating (µm)	0.05
Plating min: Termination (µin)	150
Plating min: Termination (µm)	3.81
Temperature Range - Operating	-40°C to +85°C
Termination Interface: Style	Through Hole

Electrical

Current - Maximum per Contact	1A
Voltage - Maximum	100V AC (RMS)/DC
Voltage Key	Left

Material Info

Reference - Drawing Numbers

Product Specification	PS-71243-9999
Sales Drawing	SD-71243-003

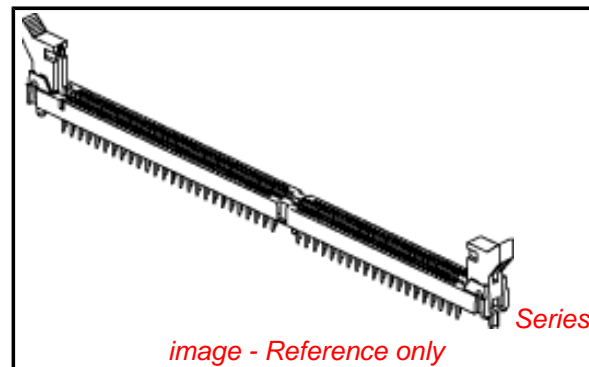


image - Reference only

EU RoHS

**ELV and RoHS
Compliant**
**REACH SVHC
Contains SVHC: No**
**Halogen-Free
Status**

China RoHS



Not Reviewed

**Need more information on product
environmental compliance?**

Email productcompliance@molex.com
For a multiple part number RoHS Certificate of
Compliance, [click here](#)

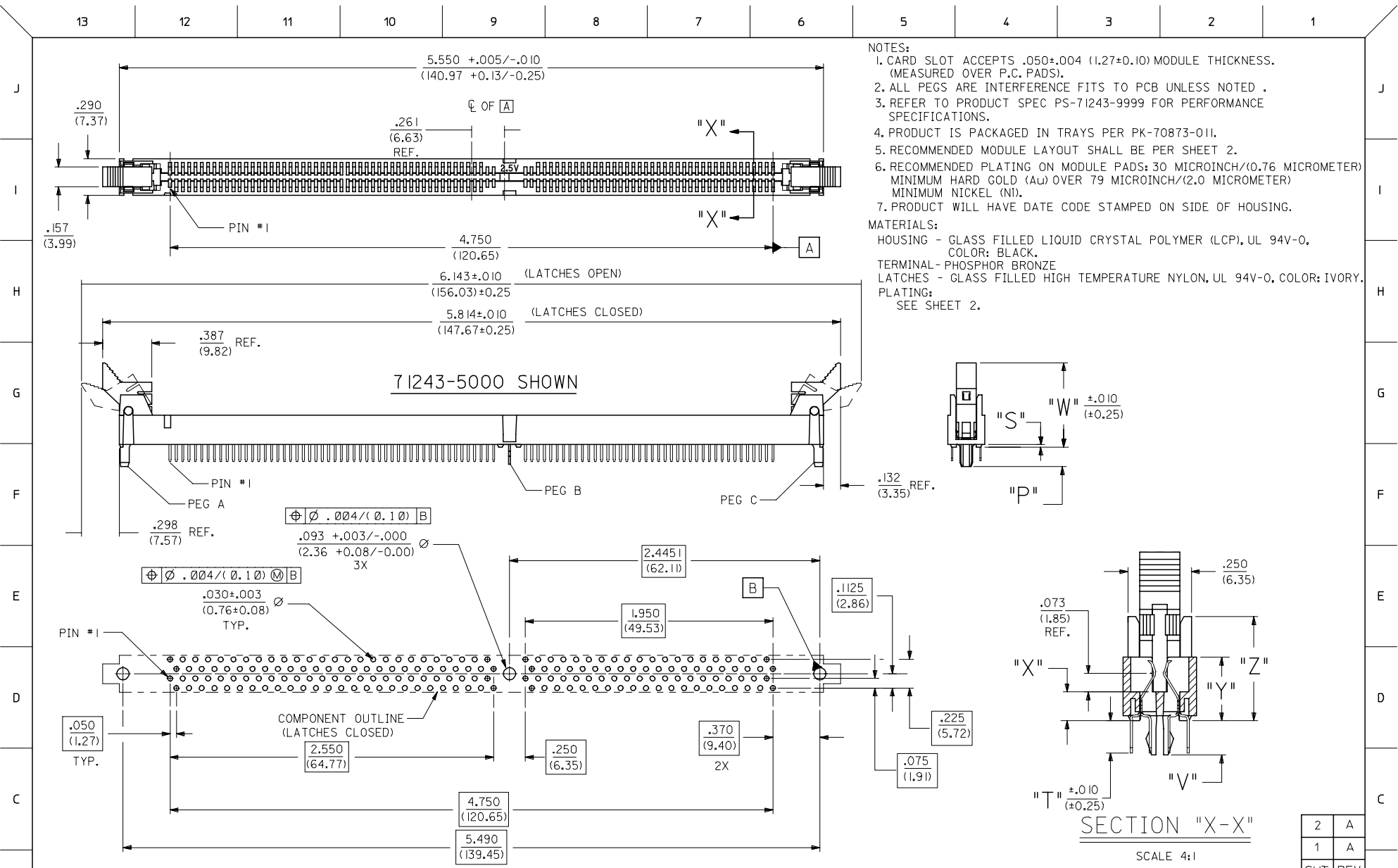
Please visit the [Contact Us](#) section for any
non-product compliance questions.

Search Parts in this Series

71243Series

This document was generated on 04/13/2010

PLEASE CHECK WWW.MOLEX.COM FOR LATEST PART INFORMATION



- NOTES:
- CARD SLOT ACCEPTS .050±.004 (1.27±0.10) MODULE THICKNESS. (MEASURED OVER P.C. PADS).
 - ALL PEGS ARE INTERFERENCE FITS TO PCB UNLESS NOTED .
 - REFER TO PRODUCT SPEC PS-71243-9999 FOR PERFORMANCE SPECIFICATIONS.
 - PRODUCT IS PACKAGED IN TRAYS PER PK-70873-011.
 - RECOMMENDED MODULE LAYOUT SHALL BE PER SHEET 2.
 - RECOMMENDED PLATING ON MODULE PADS: 30 MICROINCH/(0.76 MICROMETER) MINIMUM HARD GOLD (Au) OVER 79 MICROINCH/(2.0 MICROMETER) MINIMUM NICKEL (Ni).
 - PRODUCT WILL HAVE DATE CODE STAMPED ON SIDE OF HOUSING.

MATERIALS:

HOUSING - GLASS FILLED LIQUID CRYSTAL POLYMER (LCP), UL 94V-0, COLOR: BLACK.

TERMINAL - PHOSPHOR BRONZE

LATCHES - GLASS FILLED HIGH TEMPERATURE NYLON, UL 94V-0, COLOR: IVORY.

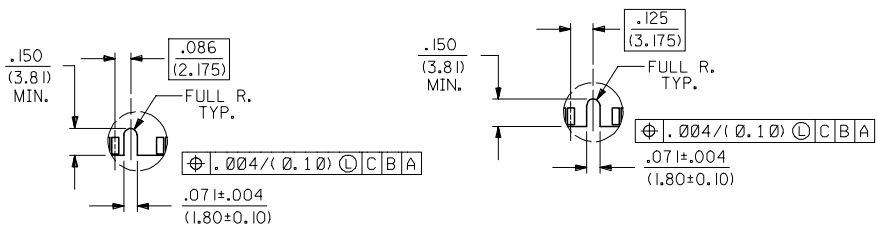
PLATING: SEE SHEET 2.

RECOMMENDED
P.C. BOARD HOLE PATTERN
(CONNECTOR SIDE)

INITIAL RELEASE FC NO: UCP2006-0472 DRAWN BY: MIBARRA 2005/09/28 CHKD BY: BSMART 2005/10/03 APPR: SMILLER 2005/10/11	DESCRIPTION	QUALITY SYMBOLS =0 =0	GENERAL TOLERANCES (UNLESS SPECIFIED)		DIMENSION STYLE IN/MM		SCALE 2:1	DESIGN UNITS INCH	THIRD ANGLE PROJECTION
			mm	INCH	DRAWN BY MIBARRA	DATE 05/08/10	TITLE .050/(1.27) PITCH SINGLE KEY 184 CKT DDR DIMM WITH SHORT LATCHES		
4 PLACES ± --- ± ---			3 PLACES ± --- ± .005		CHECKED BY BSMART		DATE 05/08/10		MATERIAL NO. SD-71243-003
2 PLACES ± 0.13 ± .010			1 PLACE ± 0.25 ± ---		APPROVED BY SMILLER		DATE 05/08/10		
ANGULAR ±1/2°			DRAFT WHERE APPLICABLE MUST REMAIN WITHIN DIMENSIONS		SIZE C		SEE CHART		SHEET NO. 1 OF 2

	13	12	11	10	9	8	7	6	5	4	3	2	1		
	PART NUMBER	DESCRIPTION	VOLTAGE KEY	PEG A	PEG B	PEG C	DIM. 'P'	DIM. 'S'	DIM. 'T'	DIM. 'V'	DIM. 'W'	DIM. 'X'	DIM. 'Y'	DIM. 'Z'	TERMINAL TYPE
J	71243-5100	2.5 VOLT VDDQ	OFFSET LEFT	PLASTIC PEG	METAL FORKLOCK	PLASTIC PEG	.155 (3.94)	.020 (0.51)	.127 (3.23)	.135 (3.43)	.664 (16.87)	.113 (2.87)	.250 (6.35)	.410 (10.41)	NOT LUBRICATED

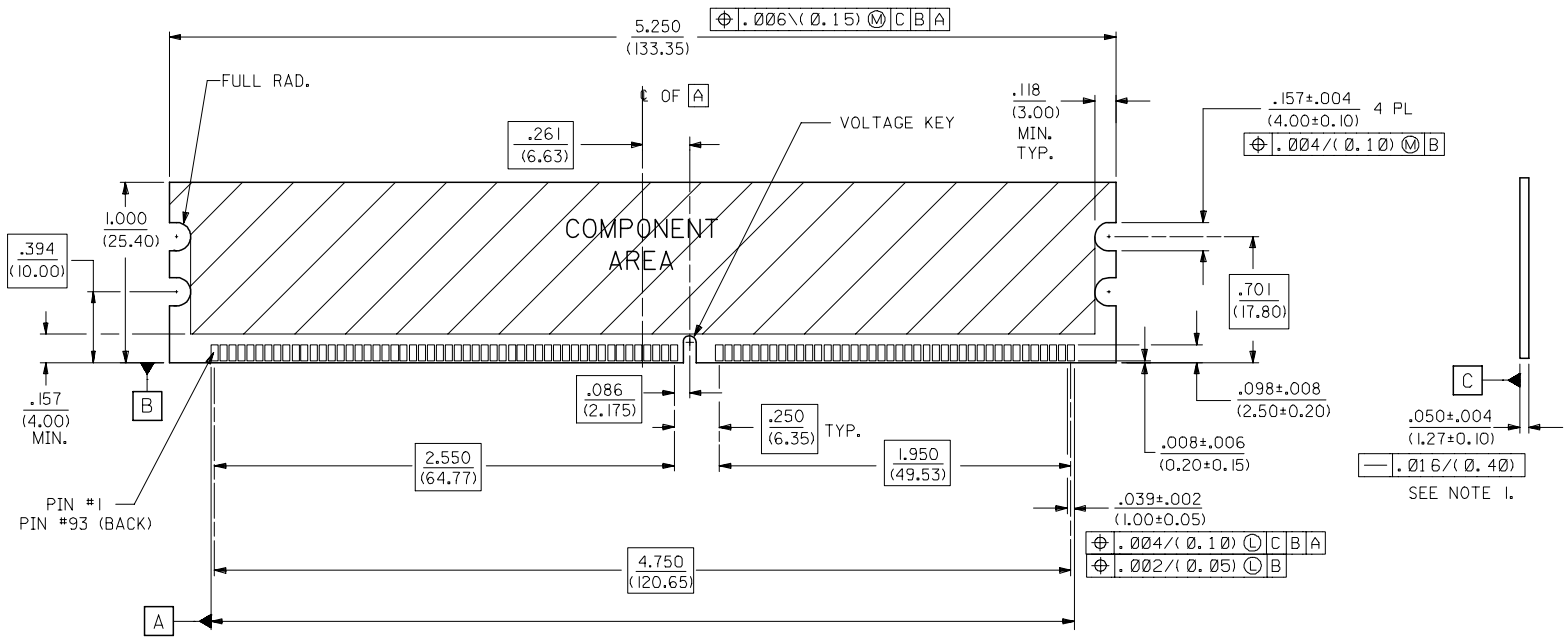
- NOTES:
1. STRAIGHTNESS OF MODULE APPLIES TO THE AREA FROM THE BOTTOM OF THE CARD UP .157/(4.00).
 2. IF TIE BARS ARE ATTACHED TO PADS, THE TIE BAR SHOULD BE ON AN INTERNAL LAYER, SO THAT THE REMNANT CANNOT CAUSE DAMAGE TO THE CONTACTS.



OFFSET LEFT KEY

CENTERED KEY

PLATING:
 CONTACT AREA:
 GOLD (Au) FLASH; THICKNESS=2-10 MICROINCH/(0.05-0.25 MICRO METER),
 OVER PALLADIUM-NICKEL (Pd-Ni); THICKNESS=30 MICROINCH/(0.76 MICROMETER) MINIMUM.
 SOLDER TAILS:
 TIN (Sn); THICKNESS=150 MICROINCH/(3.81 MICROMETER) MINIMUM.
 UNDERPLATE:
 NICKEL (Ni) OVER ENTIRE TERMINAL.



RECOMMENDED MODULE LAYOUT
 184 CKT 2.5V SHOWN

INITIAL RELEASE EC NO: UCP2006-0472 DRAWN BY: MIBARRA CHKD BY: SMART APPR: MILLER	QUALITY SYMBOLS ▽=0 ▽=0	GENERAL TOLERANCES (UNLESS SPECIFIED)		DIMENSION STYLE IN/MM		SCALE 2:1	DESIGN UNITS INCH	THIRD ANGLE PROJECTION	
		4 PLACES ± .005	± .005	DRAWN BY	DATE	TITLE			
		3 PLACES ± .010	± .010	CHECKED BY	DATE	.050/(1.27) PITCH SINGLE KEY 184 CKT DDR DIMM WITH SHORT LATCHES			
		2 PLACES ± .025	± .025	APPROVED BY	DATE	MOLEX INCORPORATED			
1 PLACE ± .050	± .050	ANGULAR ±1/2°		MATERIAL NO.	DOCUMENT NO.	SHEET NO.			
DRAFT WHERE APPLICABLE MUST REMAIN WITHIN DIMENSIONS		SEE CHART		SD-71243-003		2			