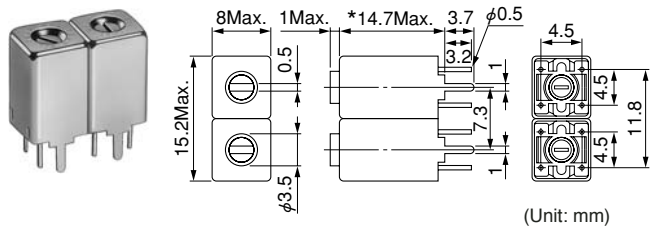


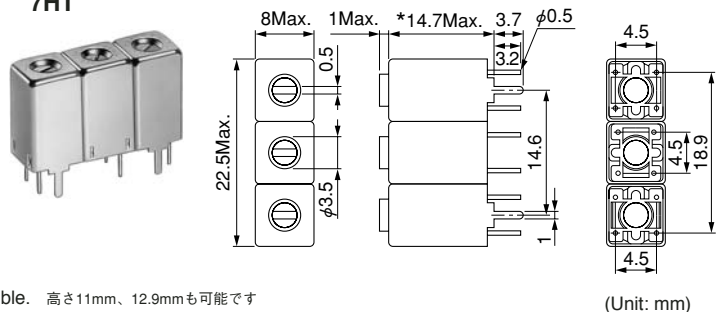
7HW Double Tuned 7HT Triple Tuned

Frequency Range: 350MHz~1.2GHz
RoHS compliant

7HW



7HT



*Either 11 or 12.9mm height is possible. 高さ11mm、12.9mmも可能です

Features

- Compact low-profile helical filters, ideal for mobile communications equipment.
- RoHS compliant

特長

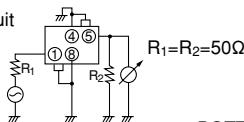
- 移動体通信に最適な小型薄形のヘルカルフィルタ
- RoHS 指令対応

Examples of 900MHz frequency response

900MHz周波数感度例

252HXP-2709F

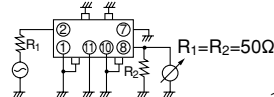
Test circuit



$R_1=R_2=50\Omega$

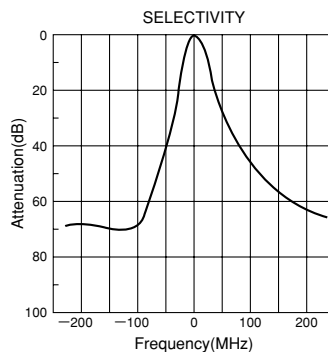
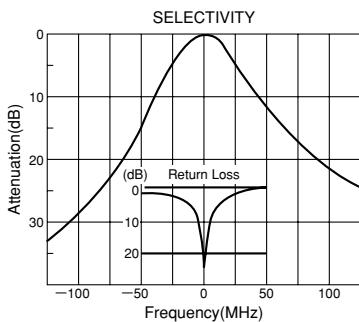
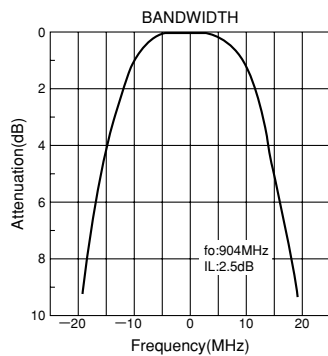
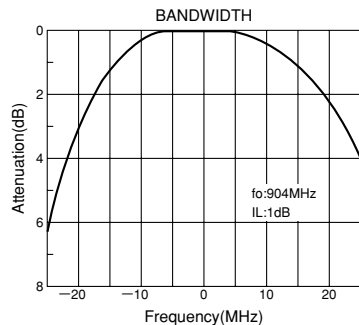
302HXP-1278B

Test circuit



$R_1=R_2=50\Omega$

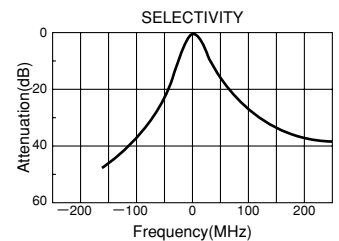
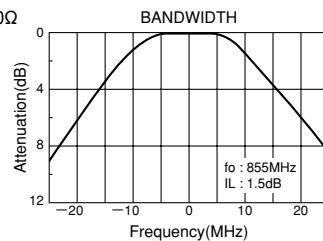
BOTTOM VIEW



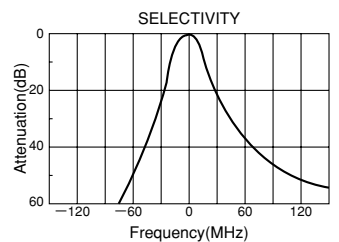
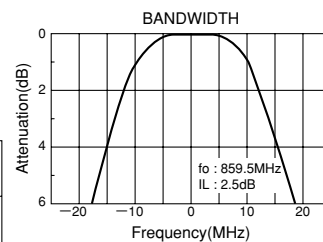
Typical characteristic for MCA radio use

MCAラジオ用代表特性曲線

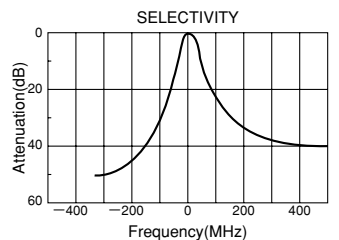
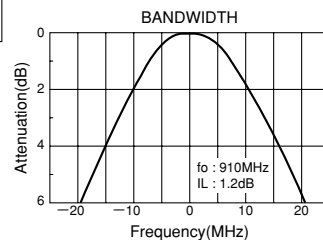
ANTENNA CIRCUIT FILTER 302MXPR-1077E



RF CIRCUIT FILTER 252HXP-2674F



LOCAL FILTER 252HXP-273F



continued on next page

次頁へ続く

continued from previous page
前頁より続く

SELECTION GUIDE FOR STANDARD FILTERS

TYPE 7HW (Double tuned)

| 東光品番 | 中心周波数 | 帯域幅 | 選択度 | | リップル | 挿入損失 |
|------------------|------------------------|-----------------------------|----------------------|----------------------|------------------|--------------------------|
| TOKO Part Number | Center Frequency (MHz) | Bandwidth (-1dB) (MHz) Min. | Fo - 50MHz (dB) Min. | Fo + 50MHz (dB) Min. | Ripple (dB) Max. | Insertion Loss (dB) Max. |
| 7HW-35515A-360 | 360 | 7.0 | 35 | 25 | 0.5 | 3.0 |
| 7HW-36020A-370 | 370 | 7.0 | 35 | 25 | 0.5 | 3.0 |
| 7HW-37020A-380 | 380 | 7.0 | 35 | 20 | 0.5 | 3.0 |
| 7HW-38025A-390 | 390 | 7.0 | 28 | 20 | 0.5 | 3.0 |
| 7HW-39525A-410 | 410 | 7.0 | 25 | 18 | 0.5 | 3.0 |
| 7HW-40525A-420 | 420 | 8.0 | 25 | 18 | 0.5 | 3.0 |
| 7HW-42025A-435 | 435 | 8.0 | 25 | 18 | 0.5 | 3.0 |
| 7HW-43525A-450 | 450 | 8.0 | 25 | 18 | 0.5 | 3.0 |
| 7HW-45025A-460 | 460 | 8.0 | 20 | 16 | 0.5 | 3.0 |
| 7HW-46025A-475 | 475 | 8.0 | 20 | 16 | 0.5 | 3.0 |
| 7HW-47530A-490 | 490 | 10.0 | 18 | 14 | 0.5 | 3.0 |
| 7HW-49030A-505 | 505 | 10.0 | 18 | 14 | 0.5 | 3.0 |
| 7HW-51030A-525 | 525 | 10.0 | 14 | 12 | 0.5 | 3.0 |

TYPE 7HT (Triple tuned)

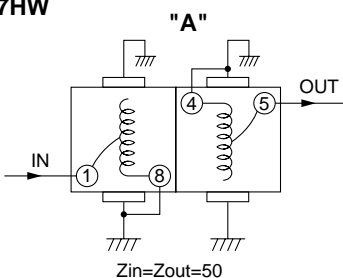
| 東光品番 | 中心周波数 | 帯域幅 | 選択度 | | リップル | 挿入損失 |
|------------------|------------------------|-----------------------------|-----------------------|-----------------------|------------------|--------------------------|
| TOKO Part Number | Center Frequency (MHz) | Bandwidth (-1dB) (MHz) Min. | Fo - ()MHz (dB) Min. | Fo + ()MHz (dB) Min. | Ripple (dB) Max. | Insertion Loss (dB) Max. |
| 302MXPR-1138D | 370 | *6.0 | 35(30) | 30(30) | 1.0 | 4.5 |
| 302MXPR-1137D | 390 | *7.0 | 30(30) | 25(30) | 1.0 | 4.0 |
| 302MXPR-1136D | 410 | *8.0 | 30(30) | 25(30) | 1.0 | 3.5 |
| 302MXPR-1109D | 415 | 13.0 | 40(50) | 30(50) | 1.0 | 3.5 |
| 302MXPR-1110D | 465 | 12.0 | 40(50) | 30(50) | 1.0 | 4.0 |
| 302MXPR-1108D | 500 | 13.0 | 36(50) | 27(50) | 1.0 | 3.5 |
| 302MXPR-1119D | 680 | 10.0 | 43(50) | 34(50) | 1.0 | 4.5 |
| 302HXP-1111B | 833 | *18.0 | 30(50) | 23(50) | 1.0 | 4.0 |

*Bandwidth: 13dB

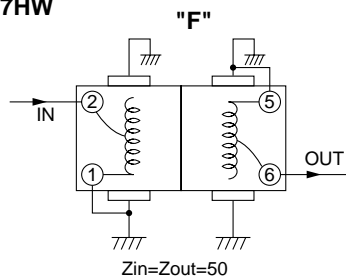
Test circuits

測定回路

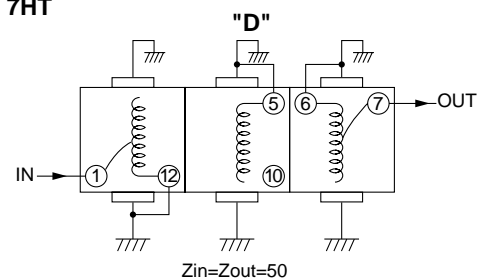
7HW



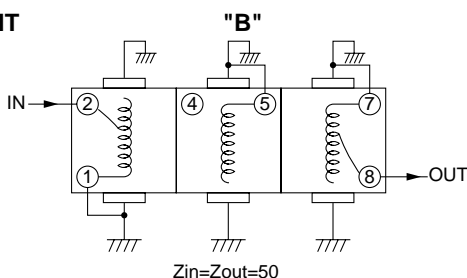
7HW



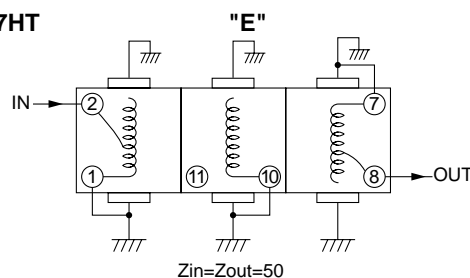
7HT



7HT



7HT



(BOTTOM VIEW)