



# C&K 8500 Series Subminiature Pushbutton Switches

Pushbutton  
A



## Features/Benefits

- Pre-travel or over-travel models available
- Ratings up to 3 AMPS
- Reliable contact design
- RoHS compliant

## Typical Applications

- Detection
- Telecommunications and networking equipment
- Computers and peripherals



Models Available

## Specifications

**CONTACT RATING:** Q contact material (853X Models): 1 AMP @ 120 V AC or 28 V DC; (855X Models): 3 AMPS @ 120 V AC or 28 V DC. See page A-63 for additional ratings.

**ELECTRICAL LIFE:**  
853X MODELS: 250,000 actuations at full load.  
855X MODELS: 10,000 actuations at full load.

**CONTACT RESISTANCE:** Below 30 mΩ typ. initial @ 2-4 V DC, 100 mA, for both silver and gold plated contacts.

**INSULATION RESISTANCE:** 10<sup>9</sup>Ω min.

**DIELECTRIC STRENGTH:** 1,000 Vrms min. @ sea level.

**OPERATING TEMPERATURE:** -30°C to 65°C.

**NOTE:** Any models supplied with Q, B or G contact material are RoHS compliant. For the latest information regarding RoHS compliance, please go to: [www.ittcannon.com/rohs](http://www.ittcannon.com/rohs).

**NOTE:** Specifications and materials listed above are for switches with standard options. For information on specific and custom switches, consult Customer Service Center.

## Materials

**CASE:** Glass filled phenolic or diallyl phthalate (DAP) (UL 94V-0).

**PLUNGER:** Phenolic or glass filled polyester, black standard(UL94V-0).

**CAP & FRAME:** Nylon, black, standard.

**BUSHING:** Brass, nickel plated.

**CONTACTS:** Q contact material: Coin silver, silver plated. See page A-63 for additional contact materials.

**TERMINALS:** Q contact material: Copper alloy, silver plated. See page A-63 for additional contact materials.

**TERMINAL SEAL:** Epoxy.

**HARDWARE:** Nut: Brass, nickel plated; Lockwasher: Steel, bright nickel plated.

## Build-A-Switch

To order, simply select desired option from each category and place in the appropriate box. Available options are shown and described on pages A-61 thru A-64. For additional options not shown in catalog, consult Customer Service Center. All models have epoxy terminal seal and are compatible with all "bottom-wash" PCB cleaning methods.

<p><b>Switch Function</b></p> <p><b>8531</b> SPST Off-Mom. 1 Amp</p> <p><b>8532</b> SPST Off-Mom. 1 Amp</p> <p><b>8533</b> SPST On-Mom. 1 Amp</p> <p><b>8534</b> SPST On-Mom. 1 Amp</p> <p><b>8551</b> SPST Off-Mom. 3 Amps</p> <p><b>8552</b> SPST Off-Mom. 3 Amps</p>	<p><b>Actuator or Plunger</b></p> <p><b>M</b> .150" high</p> <p><b>J81</b> Snap-in with frame</p> <p><b>J82</b> Snap-in with frame for LED</p> <p><b>S</b> .210" high</p> <p><b>T</b> 15/32 bushing</p> <p><b>T1</b> 15/32 bushing with frame (8532 and 8534 only)</p>	<p><b>Terminations</b></p> <p><b>Z</b> Solder lug</p> <p><b>AV</b> Right angle, PC thru-hole</p> <p><b>C</b> PC Thru-hole</p>	<p><b>Contact Material</b></p> <p><b>Q</b> Silver</p> <p><b>B</b> Gold</p> <p><b>G</b> Gold over silver</p>	<p><b>Seal</b></p> <p><b>E</b> Epoxy</p> <p><b>D</b> No epoxy seal</p>	<p><b>Cap or Plunger Color</b></p> <p><b>2</b> Black</p> <p><b>1</b> White</p> <p><b>3</b> Red</p> <p><b>9</b> Gray</p>	<p><b>Frame Color</b></p> <p><b>2</b> Black</p> <p><b>NONE</b> Models without frame</p>
---	--	---	---	--	---	---



Dimensions are shown: Inches (mm)  
Specifications and dimensions subject to change

# C&K 8500 Series Subminiature Pushbutton Switches



A

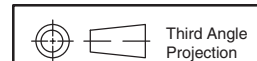
Pushbutton

## SWITCH FUNCTION

NO. POLES	MODEL NO.	RATING	SWITCH FUNCTION		TOTAL TRAVEL	ACTUATION FORCE	SCHEMATIC
			POS. 1	POS. 2			
SP	<b>8531</b>	1 AMP	OFF	MOM.	.095 (2,41) TYP. with overtravel .042 (1,07) TYP.	7.7 oz (220g) TYP.	N.O. with overtravel
	<b>8551</b>	3 AMPS					
<b>SPST</b> <p>Part number shown: 8531MZQE2</p>							
SP	<b>8532</b>	1 AMP	OFF	MOM.	.050 (1,27) TYP.	6 oz (170g) TYP.	N.O.
	<b>8552</b>	3 AMPS					
<b>SPST</b> <p>Part number shown: 8532MZQE2</p>							
SP	<b>8533</b>	1 AMP	ON	MOM.	.080 (2,03) TYP. with pretravel .057 (1,45) TYP.	11.5 oz (456 g) TYP.	N.C. with pretravel
	<b>8534</b>	1 AMP	ON	MOM.			
<b>SPST</b> <p>Part number shown: 8533MZQE2</p>							

MOM. = Momentary

All models with all options when ordered with G or Q contact material.



Dimensions are shown: Inches (mm)  
Specifications and dimensions subject to change

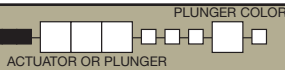


# C&K 8500 Series Subminiature Pushbutton Switches

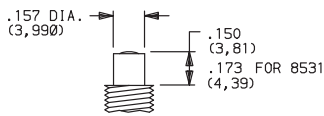
Pushbutton

A

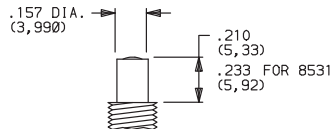
## PLUNGER



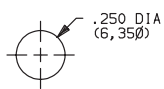
### M .150" HIGH PLUNGER



### S .210" HIGH PLUNGER



### PANEL MOUNTING



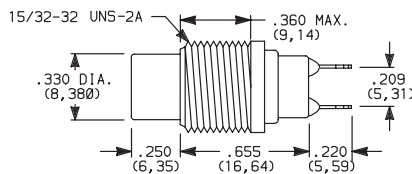
OPTION CODE	PLUNGER COLOR
2	BLACK
3	RED

NOTE: One mounting nut and lockwasher supplied with all actuators (except T actuator: two nuts supplied).

## ACTUATOR

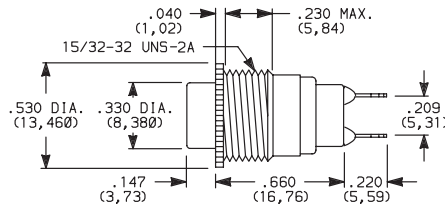


### T 15/32 BUSHING



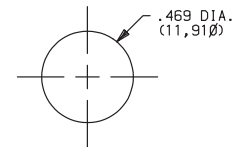
NOTE: No frame color choice required.

### T1 15/32 BUSHING WITH FRAME



NOTE: No frame color choice required. Available with 8532 and 8534 models only.

### PANEL MOUNTING



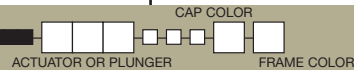
OPTION CODE	CAP COLOR
2	BLACK
1	WHITE
3	RED
9	GRAY

Cap Finish: gloss. Other colors available, consult Customer Service Center.

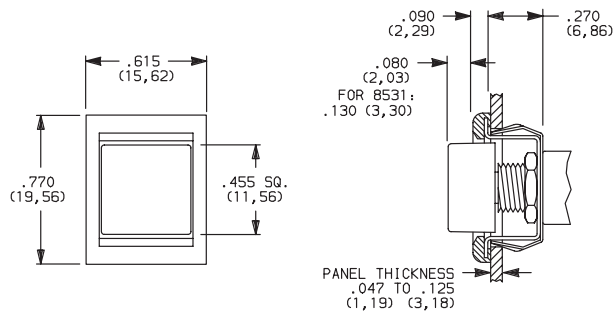
One mounting nut and lockwasher supplied with all actuators (except T actuator: two nuts supplied).

NOTE: Caps available for plunger options, see page A-63.

## ACTUATOR—SNAP-IN FRONT MOUNT



### J81 SNAP-IN WITH FRAME



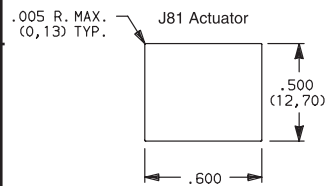
OPTION CODE	CAP AND FRAME COLOR
2	BLACK

Cap and Frame Finish: matte. Other colors available, consult Customer Service Center.

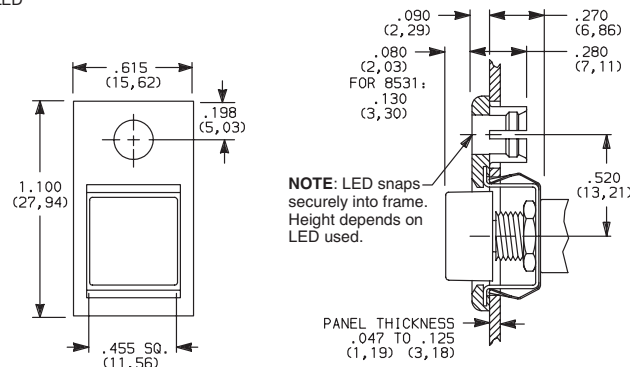
One mounting nut and lockwasher supplied with all actuators.

NOTE: Caps & frames available separately, see pages A-63 and A-64.

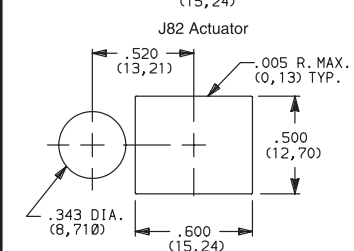
### PANEL MOUNTING



### J82 SNAP-IN WITH FRAME FOR LED



NOTE: LED snaps securely into frame. Height depends on LED used.



LED not included. For LED information, see page A-64.



Dimensions are shown: Inches (mm)

Specifications and dimensions subject to change



# C&K 8500 Series Subminiature Pushbutton Switches



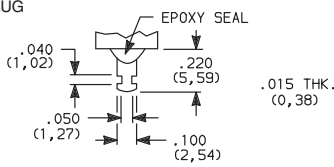
A

Pushbutton

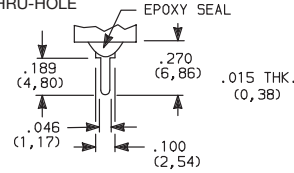
## TERMINATIONS



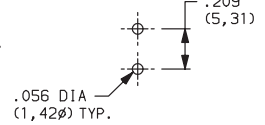
### Z SOLDER LUG



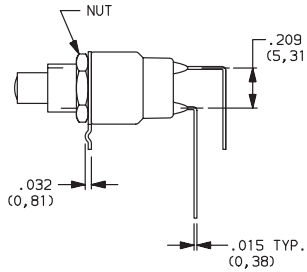
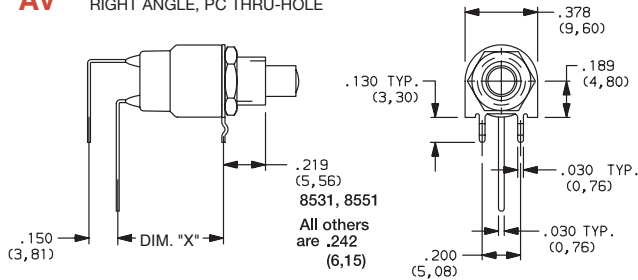
### C PC THRU-HOLE



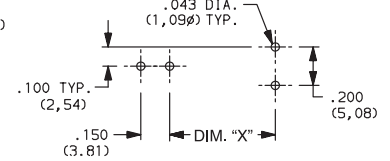
### PC MOUNTING



### AV RIGHT ANGLE, PC THRU-HOLE



### PC MOUNTING



MODEL NO.	DIM "X"
8531, 8533, 8551	0.500
8532, 8534, 8552	0.438

NOTE: Available with M or S plunger models only

## CONTACT MATERIAL



OPTION CODE	RoHS COMPLIANT *	RoHS COMPATIBLE *	TERMINAL PLATING	CONTACT MATERIAL	RATINGS	
<b>B</b>	YES	YES	GOLD <sup>1</sup>	GOLD	LOW LEVEL/DRY CIRCUIT	0.4 VA MAX. @ 20 V AC OR DC MAX.
<b>Q</b>	YES	YES	SILVER <sup>4</sup>	SILVER <sup>5</sup>	POWER	853X MODELS: 1 AMP @ 120 V AC OR 28 V DC. 855X MODELS: 3 AMPS @ 120 V AC OR 28 V DC.
<b>G</b>	YES	YES	GOLD OVER SILVER <sup>2</sup>	GOLD <sup>3</sup>	LOW LEVEL/DRY CIRCUIT OR POWER	0.4 V MAX @20 V AC OR DC MAX. OR 853X MODELS: 1 AMP @ 120 V AC OR 28 V DC. 855X MODELS: 3 AMPS @120 V AC OR 28 V DC.

\* Note: See Technical Data section of this catalog for RoHS compliant and compatible definitions and specifications.

- CONTACTS & TERMINALS: Copper alloy, with gold plate over nickel plate.
- CONTACTS: Coin silver, with gold plate over nickel plate.
- TERMINALS: Copper alloy, with gold plate over nickel plate.
- CONTACTS: Coin silver, silver plated.
- TERMINALS: Copper alloy, silver plated.

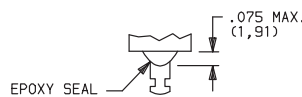
NOTE: Any models supplied with Q, B or G contact material are RoHS compliant. For the latest information regarding RoHS compliance, please go to: [www.ittcannon.com/rohs](http://www.ittcannon.com/rohs).

All models with all options when ordered with G or Q contact material.  
Q contact material standard with C, Z terminations.  
8551 & 8552 available with Q contact material only.

## SEAL

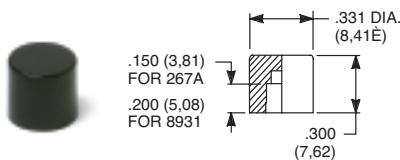


### E EPOXY SEAL



## AVAILABLE HARDWARE

### Cap

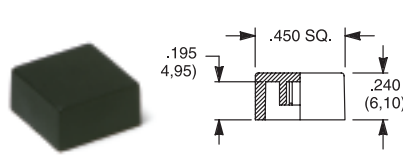


PART NO.	COLOR	PART NO.	COLOR
267A01000	WHITE	893101000	WHITE
267A02000	BLACK	893102000	BLACK
267A03000	RED	893103000	RED
267A09000	GRAY	893109000	GRAY

85X2T, 8534T models only  
Material: Nylon  
Finish: Gloss

85X1T, 8532T1, 8533T, 8534T1 models only  
Material: Nylon  
Finish: Gloss

### Cap, J80, J81 & J 82 options only



PART NO.	COLOR
448901000	WHITE
448902000	BLACK
448903000	RED
448909000	GRAY

Material: Nylon  
Finish: Gloss or matte

### Frame



PART NO.	COLOR
613302263	BLACK

Material: Nylon  
Finish: Matte



Dimensions are shown: Inches (mm)  
Specifications and dimensions subject to change



Other colors available, consult Customer Service Center.



# C&K 8500 Series Subminiature Pushbutton Switches

## AVAILABLE HARDWARE

Pushbutton  
A

### Frame



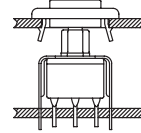
**PART NO.**  
**615602263** BLACK

Material: Nylon  
Finish: Matte

**NOTE:** Additional nuts, locking rings and lockwashers available separately, see section "Technical Data and Additional Hardware".  
Other colors available, consult Customer Service Center.

Frames snap into panel opening and are independent from switch mounting. Accurate positioning of the PC mounted switch relative to the panel opening is necessary to provide proper clearance between actuator and frame. Available in two basic styles and four panel thicknesses .047-.125 in. Material: Nylon. Finish: Matte.

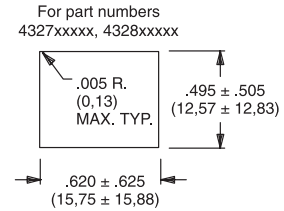
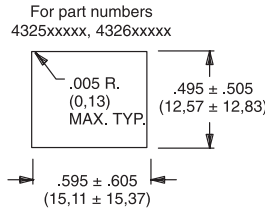
### TYPICAL APPLICATION



.047" (1,19) PANEL THK.    .062" (1,57) PANEL THK.    .090" (2,29) PANEL THK.    .125" (3,18) PANEL THK.

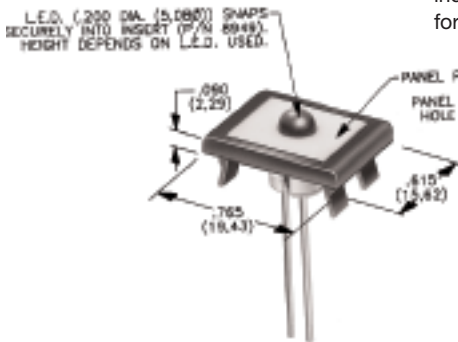
<b>PART NO.</b> <b>432502263</b>	<b>PART NO.</b> <b>432602263</b>	<b>PART NO.</b> <b>432702263</b>	<b>PART NO.</b> <b>432802263</b> BLACK
-------------------------------------	-------------------------------------	-------------------------------------	---

### PANEL MOUNTING



### Panel Inserts

Above frames (part nos. 432XXXXXX) are also available with insert which accepts LED for indicator light assembly. Order insert separately from frame. Blank insert panel (without hole for LED) also available. **LED not included.**



PANEL INSERT WITH HOLE FOR LED

**PART NO.**  
**894902000**

BLANK PANEL INSERT WITHOUT HOLE FOR LED

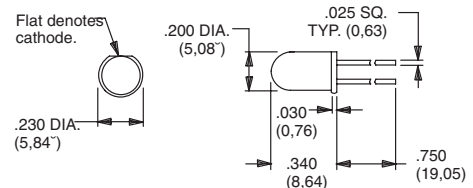
**PART NO.**  
**476602000** BLACK

Special colors, custom markings available, consult Customer Service Center.

### LED INFORMATION

**Process Information:** Soldering to LED leads must be completed within 5 seconds at 500°F (260°C) maximum.

LEDs are not supplied with J82 option. LED snaps into switch frame surrounding actuator and is wired externally.



Suggested LED for J82 option.  
Dimensions for reference only.



Dimensions are shown: Inches (mm)  
Specifications and dimensions subject to change