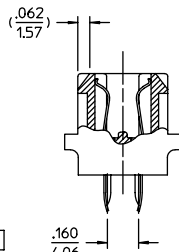
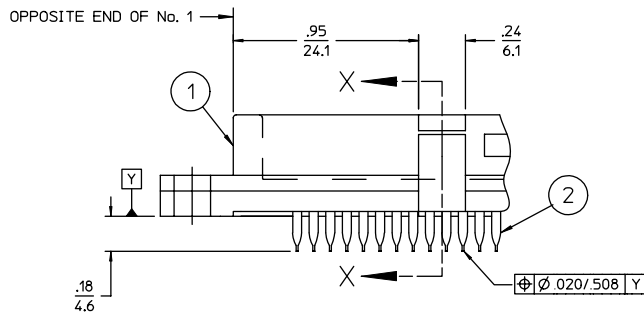


NOTES:

- 1 4 DIGIT DATE CODE, AND CATALOG No. LOCATED APPROXIMATELY AS SHOWN.
- 2 STEP 5 DOES NOT APPLY TO 84 & 88 SERIES. OMIT STEP 5 ON CATALOG No..
- 3 STEP 6 $\bullet = 2$ DOES NOT APPLY TO 166 SERIES.
- 4 SERIES:
84 SERIES FOR SMALL C PRESS® WITH $\phi 0.032 \pm .003 / 0.81 \pm 0.08$ P.T.H
88 SERIES FOR STANDARD C PRESS® WITH $\phi 0.040 \pm .003 / 1.02 \pm 0.08$ P.T.H
166 SERIES FOR SOLDER TAIL WITH $\phi 0.040 \pm .003 / 1.02 \pm 0.08$ P.T.H
- 5 166 SERIES TAILS ARE .1010/0.254 X .017/0.432 IN LENGTHS OF .125/3.17 AND .170/4.32.
- 6 INSULATOR AVAILABLE IN BLACK WHEN UTILIZING 166 SERIES DEVIATION 4338.
- 7 AVAILABLE FOR 84 SERIES RECEPTACLE ONLY.
- 8 CUSTOMER TOOLING:

| TOOLS | | |
|--------------------------|------------------|--------------|
| 84R SERIES TOOLING | | |
| DESCRIPTION | CATALOG No. | |
| INSERTION TOOL | 14 POSITION | 107-43604-01 |
| | 24 POSITION | 107-43604-02 |
| | 36 POSITION | 107-43604-03 |
| | 50 POSITION | 107-43604-04 |
| CONTACT REMOVAL TOOL | N/A | 107-43929 |
| SINGLE CONTACT KNOCK-OUT | N/A | 107-42456 |
| INSULATOR REMOVAL | 14 & 24 POSITION | 107-25875 |
| | 36 & 50 POSITION | 107-25876 |

- 9 ADD DEVIATION No. 5422 TO CATALOG No. IF YOU WANT TO HAVE DUST COVERS BULK PACKAGED.
- 10 FOR PLATED THRU HOLE SPECIFICATION SEE DRAWING 27331 FOR $\phi 0.040 / 1.02$ P.T.H. & DRAWING 27367 FOR $\phi 0.032 / 0.81$ P.T.H.



PARTIAL SECTION X-X

RECEPTACLE WITH VIBRATION LOCKS SHOWN 7 8

ORDERING CHART

SPECIFY COMPLETE CONNECTOR BY FOLLOWING INDICATED STEPS

4 STEP 1 CODE

| |
|------------|
| 84 SERIES |
| 88 SERIES |
| 166 SERIES |

STEP 2 GRID

INSULATORS FOR .085/2.16 X .160/4.06 GRID ARE BLACK IN COLOR

| CODE | DESCRIPTION |
|------|--|
| 11 | .085/2.16 X .151/3.83 (PLUG) .085/2.16 X .169/4.29 (RECEPTACLE) |
| 12 | .085/2.16 X .160/4.06 (P & R) |

STEP 3 No. OF CONTACT PAIRS

| | |
|----|----|
| 14 | 24 |
| 36 | 50 |

STEP 4 INSULATOR

| CODE | DESCRIPTION |
|------|-----------------------------------|
| P | PLUG |
| R | RECEPTACLE |
| V | RECEPTACLE WITH VIBRATION LOCKS 7 |

STEP 7 CONTACT PLATING

| PLATING CODE | DESCRIPTION | DESCRIPTION |
|--------------|---|-------------|
| D | 30 MICROINCHES GOLD OVER 50 MICROINCHES NICKEL ON CONTACT AREA WITH BRIGHT TIN ON THE C-SECTION | NON- RoHS |
| C | 30 MICROINCHES GOLD OVER 50 MICROINCHES NICKEL ON CONTACT AREA WITH GOLD FLASH ON THE C-SECTION | RoHS |
| H | 30 MICROINCHES GOLD OVER 50 MICROINCHES NICKEL ON CONTACT AREA WITH PURE TIN ON THE C-SECTION | RoHS |

STEP 6 INSERTS

| CODE | DESCRIPTION |
|------|----------------------|
| 0 | NO INSERT |
| 1 | #4-40 FLUSH INSERT |
| 2 | #4-40 STANDOFF |
| 3 | #4-40 TAPPED HOLES 7 |

STEP 5 CONTACT TAIL LENGTH (A) 2 5
FOR 166 SERIES ONLY. NOT FOR 84 & 88 SERIES.

| CODE | DESCRIPTION |
|------|--|
| 1 | .125/3.17 (FOR .062/1.57 P.C.BOARDS) |
| 2 | .170/4.32 (FOR .093/2.36 & .125/3.17 P.C.BOARDS) |

SPECIFICATIONS
MATERIALS

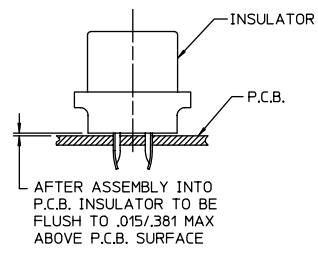
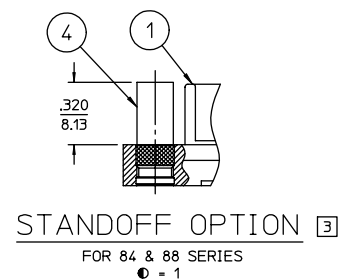
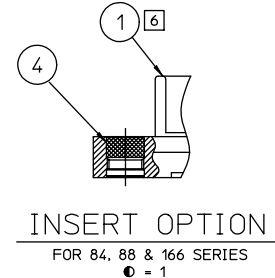
- 6 1 Insulator ————— Thermoplastic Polyester, glass reinforced Rated UL 94V-0. Color: .085/2.16 X .151/3.83 grid, White .085/2.16 X .169/4.29 grid, White .085/2.16 X .160/4.06 grid, Black
- 2 Standard Contacts ————— Copper Alloy 725 Plating: Consult Sales Department for Options.
- 3 Dust Cover/Insertion Cap 9 ————— Thermoplastic Polycarbonate Rated UL 94V-0. Color: Blue (Plug) Red (Receptacle) Not Available For 166 Series & 8412**V3Δ Connectors 8 If Need Consult Sales Department, Cover To Be Used For One Connector Insertion Only.
- 4 Insert & Stand Off ————— Brass Qty. 2

PERFORMANCE CHARACTERISTICS

Insulation resistance ————— 5,000 megohms minimum
Dielectric withstanding voltage (at sea level) — 1000 VAC RMS
Current rating ————— 1 amp @ 70°C
3 amp @ 20°C
Operating temperature range ————— -55°C to +105°C
Daughter Card ————— .054/1.37 TO .071/1.80

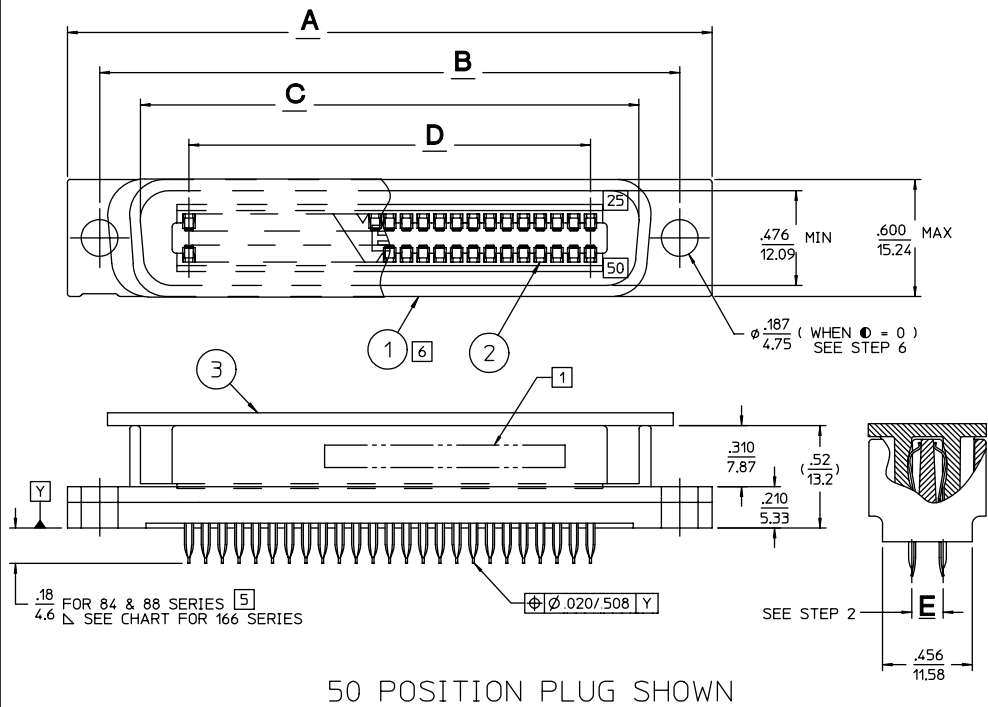
Compliant Contact 88 & 166 SERIES
Max. Insertion Force (per contact) ————— 40 lbs./178 N
Min. Retention Force (per contact) ————— 10 lbs./44 N

Compliant Contact 84 SERIES
Max. Insertion Force (per contact) ————— 20 lbs./89 N
Min. Retention Force (per contact) ————— 5 lbs./22 N

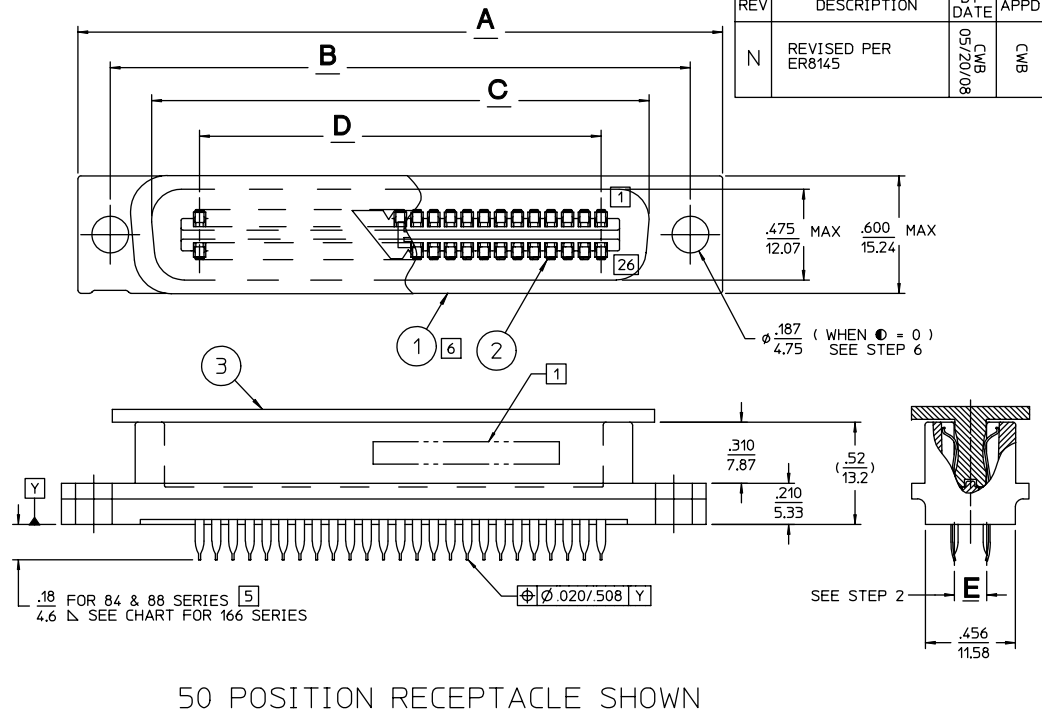


| | | |
|--|---|--|
| PER ASME Y14.5M-1994 UNLESS OTHERWISE SPECIFIED: DIMENSIONS ARE IN INCHES OR INCHES/MM TOLERANCES: .MM DECIMALS .XX ± .02/0.51 .XXX ± .005/0.127 ANGLES ± SCALE: 1:1 | | <p>Winchester Electronics Corporation 62 Barnes Industrial Road North Wallingford, Connecticut 06492</p> |
| CUSTOMER DRAWING | TITLE C - TEL CONNECTOR PLUG & RECEPTACLE FOR 84, 88, & 166 SERIES | |
| DRAWN J.T.G. 5/3/83 APPROVED J.A.D. 5/10/83 | APPROVED J.A.D. 5/10/83 APPROVED J.A.D. 5/10/83 | TITLE A 23917 SHT. 1 OF 2 REV. N |

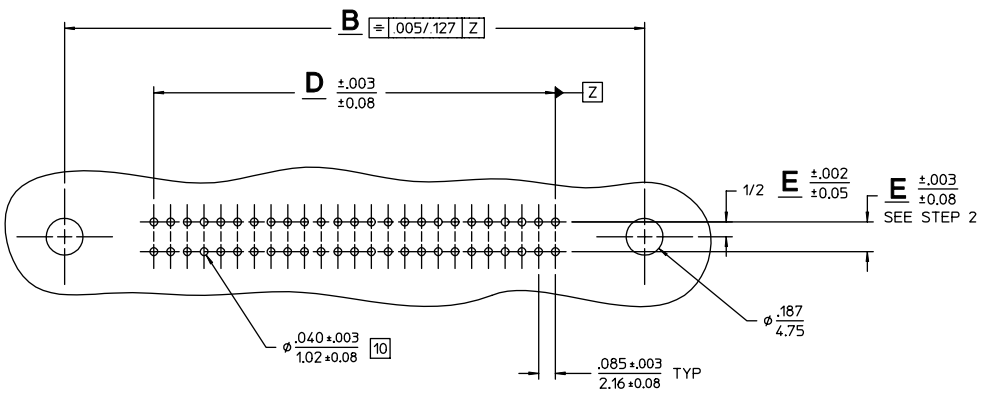
| REV | DESCRIPTION | BY DATE | APPD |
|-----|--------------------|-----------------|------|
| N | REVISED PER ER8145 | CMB 05/20/08 | CMB |



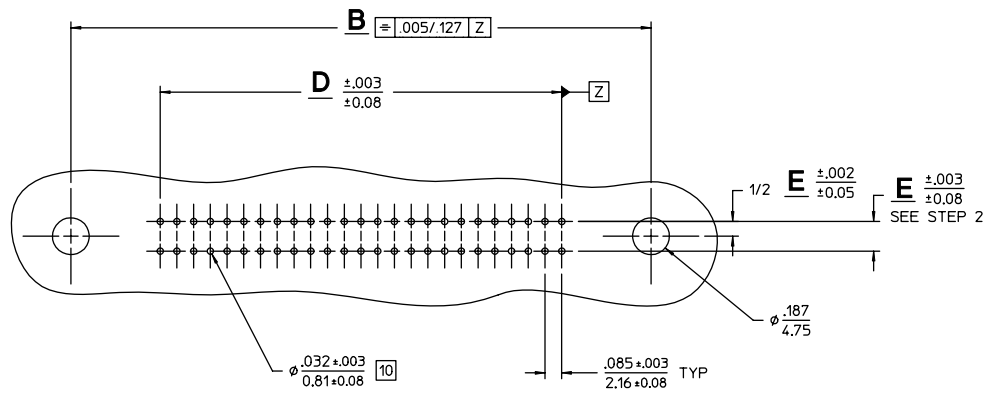
50 POSITION PLUG SHOWN



50 POSITION RECEPTACLE SHOWN



P. C. BOARD HOLE PATTERN
84 & 166 SERIES



P. C. BOARD HOLE PATTERN
84 SERIES

| | | | | | |
|-----------------|-------------|--------------------------|-------------------------------|---------------------------------|--------------------------|
| 50 | 3.275/83.18 | 2.947/74.85 | 2.534/64.36 | 2.527/64.19 | 2.040/51.82 |
| 36 | 2.680/68.07 | 2.352/59.74 | 1.939/49.25 | 1.932/49.07 | 1.445/36.70 |
| 24 | 2.170/55.12 | 1.842/46.79 | 1.429/36.30 | 1.422/36.12 | .935/23.75 |
| 14 | 1.745/44.32 | 1.417/35.99 | 1.004/25.50 | .997/25.32 | .510/12.95 |
| No. OF CONTACTS | A | B $\pm 0.003 / \pm 0.08$ | C $\pm 0.002 / \pm 0.05$ PLUG | C $\pm 0.002 / \pm 0.05$ RECEPT | D $\pm 0.003 / \pm 0.08$ |

| | | |
|--|--|---|
| PER ASME Y14.5M-1994 UNLESS OTHERWISE SPECIFIED: DIMENSIONS ARE IN INCHES OR INCHES/MM TOLERANCES: DECIMALS .XX $\pm .02/0.51$.XXX $\pm .005/0.127$ ANGLES \pm SCALE: 1:1 | | Winchester Electronics Corporation 62 Barnes Industrial Road North Wallingford, Connecticut 06492 |
| CUSTOMER DRAWING | | |
| DRAWN J.M.G. 10/10/98 APPROVED DATE | DATE 10/28/98 L.A.W. APPROVED DATE | TITLE C - TEL CONNECTOR PLUG & RECEPTACLE FOR 84, 88, & 166 SERIES |
| A | | 23917 |
| SHT.2 OF 2 | | REV. M |